



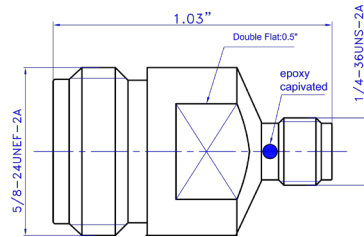
Between Series Adapters

N to SMA In-Series Adapters • DC to 18 GHz

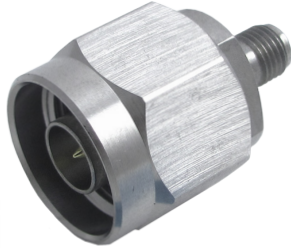
N (f) to SMA (f)



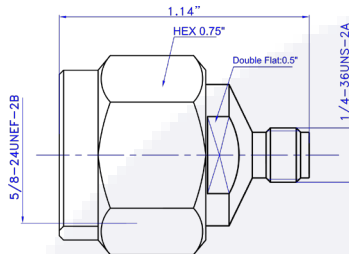
NJ-SMAJ-FF



N (m) to SMA (f)



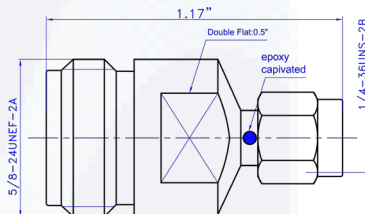
NP-SMAJ-MF



N (f) to SMA (m)



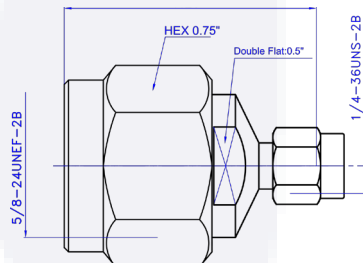
NJ-SMAP-FM



N (m) to SMA (m)



NP-SMAP-MM



Electrical

- **Frequency Range** DC - 18.0 GHz
- **VSWR** DC - 18 GHz1.25:1
- **Impedence** 50 Ohms
- **Operating Temp** -65°C to +125°C

Materials

- **Housing**
Passivated Stainless Steel
- **Center Conductor**
BeCu Alloy Gold Plate over Nickel
- **Captivation**
Epoxy