


Part No:

HA6A2-15



15 dB - Fixed Attenuator SMA Male To SMA Female Up To 6 GHz Rated To 2 Watts With Passivated Stainless Steel Body

The HASCO **HA6A2-15** is an RF attenuator that operates from DC to 6 GHz and handles up to 2 Watts (CW). This attenuator is constructed with SMA Male to SMA Female connectors. The HA6A2-15 Attenuator offers 1.20:1 max VSWR.

The HA6A2-15 Attenuator is RoHS Compliant. 

An attenuator is an electronic device that reduces the power of a signal without appreciably distorting its waveform. Attenuators are a useful building block within RF design where they reduce the signal level while providing an accurate match for the characteristic impedance used. HASCO offers a huge selection of RF and microwave attenuators and can support most requirements, such as SMA, 2.92mm, 2.4mm, 1.85mm, Type N and TNC in addition to many other RF and Microwave coaxial attenuators.

Electrical

- Frequency Range DC - 6 GHz
- Attenuation (dB) SEE CHART - >>>
- VSWR
 - DC - 2.5 GHz..... 1.15:1 MAX
 - 2.5 - 6 GHz:
 - 0-6dB..... 1.20:1
 - 7-12dB 1.25:1
 - 13-20dB..... 1.30:1
 - 30dB 1.35:1
- Impedance 50 Ohms
- RF Power Nominal 2 Watts @ 25°C Peak: 200W

| **dB Value | PART NO. | ATTENUATION |
|------------|----------|-------------|
| 1 | HA6A2-01 | ± 0.50 |
| 2 | HA6A2-02 | ± 0.50 |
| 3 | HA6A2-03 | ± 0.50 |
| 4 | HA6A2-04 | ± 0.50 |
| 5 | HA6A2-05 | ± 0.50 |
| 6 | HA6A2-06 | ± 0.50 |
| 7 | HA6A2-07 | ± 0.50 |
| 8 | HA6A2-08 | ± 0.50 |
| 9 | HA6A2-09 | ± 0.50 |
| 10 | HA6A2-10 | ± 0.50 |
| 12 | HA6A2-12 | ± 0.50 |
| 20 | HA6A2-20 | ± 0.50 |
| 30 | HA6A2-30 | ± 0.75 |

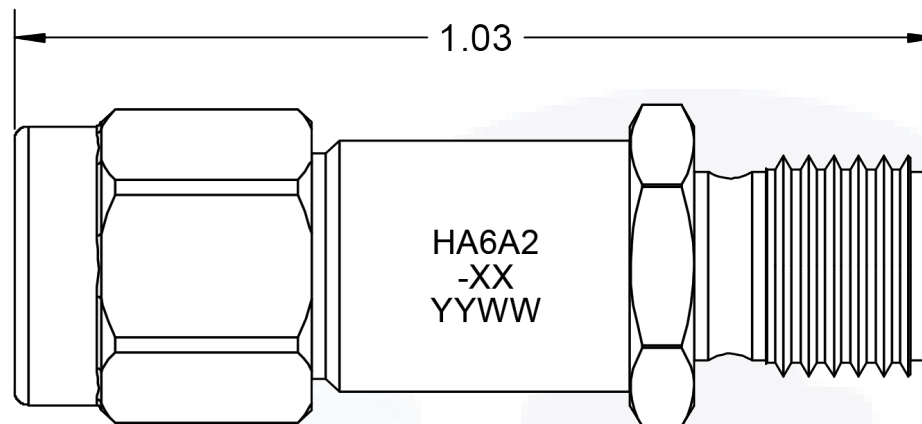
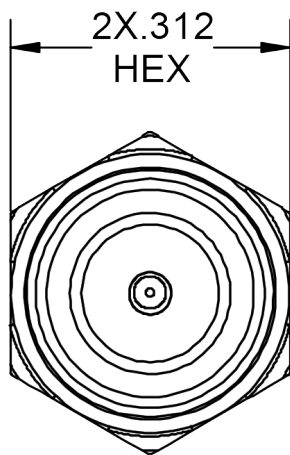
Environmental Data


- Temperature Range -65°C - +125°C
- Recommended Mating Torque 7-8 in. lbs (0.8 to 0.9 Nm) [\(HASCO Torque Wrench #HTW-516-08 available\)](#)

Material

- Housing Passivated Stainless Steel
- Contact Gold Plated Beryllium Copper
- Dielectric PTFE (Teflon) IAW ASTM-D1710
- Resistive Element Thin Film on Ceramic Resistive Circuit

To view online, go to: [15dB - Fixed Attenuator SMA Male To SMA Female Up To 6 GHz Rated to 2 Watts With Passivated Stainless Steel Body](#)



| | | | | | | | | | | |
|-----|-------------|------|-------|--|-----------------|--|---|--------------|------------|--|
| LTR | DESCRIPTION | DATE | APPR. | DRAWN BY: | CHECKED BY: TAC |  <p>5214 Bonsai Street • Moorpark, CA 93021 (888) 498-3242 • sales@hasco-inc.com www.hasco-inc.com</p> | | | | |
| - | RELEASE | 4/15 | TAC | APPROVED BY: TAC | | | | | | |
| | | | | THESE DRAWINGS AND SPECIFICATIONS ARE THE PROPERTY OF HASCO COMPONENTS AND SHALL NOT BE REPRODUCED, COPIED NOR USED - IN WHOLE OR IN PART - AS THE BASIS FOR THE MANUFACTURE OR SALE OF OTHER ITEMS WITHOUT THE EXPRESS, WRITTEN PERMISSION OF HASCO COMPONENTS. | | MATERIALS: SEE DATA SHEET | CAGE CODE: 0T8L4 | SCALE: NS | SIZE: - | |
| | | | | | | FINISHES: SEE DATA SHEET | PART NO./DRAWING NO. HA6A2-15 | REV: - | | |
| | | | | | | THIS DRAWING IS A CONTROLLED DOCUMENT | | | | |
| | | | | | | | | | | |
| | | | | | | | | | | |