


Part No:

HA6A2-30



*30 dB - Fixed Attenuator SMA Male To SMA Female Up To 6 GHz
Rated To 2 Watts With Passivated Stainless Steel Body*

The HASCO **HA6A2-30** is an RF attenuator that operates from DC to 6 GHz and handles up to 2 Watts (CW). This attenuator is constructed with SMA Male to SMA Female connectors. The HA6A2-30 Attenuator offers 1.20:1 max VSWR.

The HA6A2-30 Attenuator is RoHS Compliant. 

An attenuator is an electronic device that reduces the power of a signal without appreciably distorting its waveform. Attenuators are a useful building block within RF design where they reduce the signal level while providing an accurate match for the characteristic impedance used. HASCO offers a huge selection of RF and microwave attenuators and can support most requirements, such as SMA, 2.92mm, 2.4mm, 1.85mm, Type N and TNC in addition to many other RF and Microwave coaxial attenuators.

Electrical

- Frequency Range DC - 6 GHz
- Attenuation (dB) SEE CHART - >>>
- VSWR DC - 2.5 GHz..... 1.15:1 MAX
2.5 - 6 GHz:
0-6dB..... 1.20:1
7-12dB 1.25:1
13-20dB..... 1.30:1
30dB 1.35:1
- Impedance 50 Ohms
- RF Power Nominal 2 Watts @ 25°C Peak: 200W

**dB Value	PART NO.	ATTENUATION
1	HA6A2-01	± 0.50
2	HA6A2-02	± 0.50
3	HA6A2-03	± 0.50
4	HA6A2-04	± 0.50
5	HA6A2-05	± 0.50
6	HA6A2-06	± 0.50
7	HA6A2-07	± 0.50
8	HA6A2-08	± 0.50
9	HA6A2-09	± 0.50
10	HA6A2-10	± 0.50
12	HA6A2-12	± 0.50
20	HA6A2-20	± 0.50
30	HA6A2-30	± 0.75

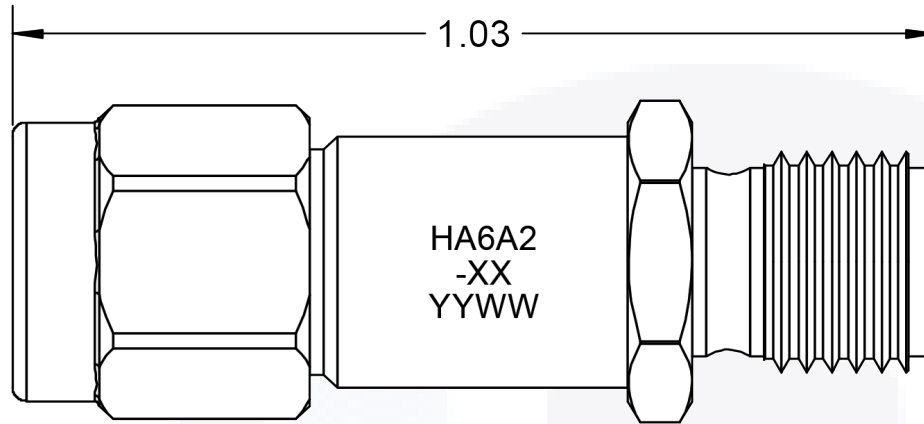
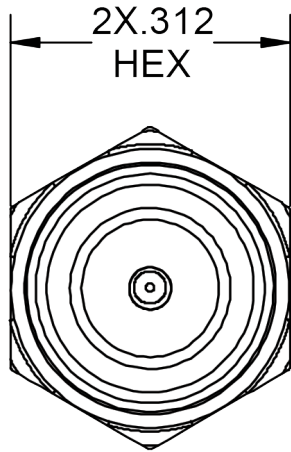
Environmental Data

- Temperature Range -65°C - +125°C
- Recommended Mating Torque 7-8 in. lbs (0.8 to 0.9 Nm) [\(HASCO Torque Wrench #HTW-516-08 available\)](#)

Material

- Housing Passivated Stainless Steel
- Contact Gold Plated Beryllium Copper
- Dielectric PTFE (Teflon) IAW ASTM-D1710
- Resistive Element Thin Film on Ceramic Resistive Circuit

To view online, go to: [30dB - Fixed Attenuator SMA Male To SMA Female Up To 6 GHz Rated to 2 Watts With Passivated Stainless Steel Body](#)



LTR	DESCRIPTION	DATE	APPR.	DRAWN BY:	CHECKED BY: TAC
-	RELEASE	4/15	TAC	APPROVED BY: TAC	
				THESE DRAWINGS AND SPECIFICATIONS ARE THE PROPERTY OF HASCO COMPONENTS AND SHALL NOT BE REPRODUCED, COPIED NOR USED - IN WHOLE OR IN PART - AS THE BASIS FOR THE MANUFACTURE OR SALE OF OTHER ITEMS WITHOUT THE EXPRESS, WRITTEN PERMISSION OF HASCO COMPONENTS.	
THIS DRAWING IS A CONTROLLED DOCUMENT					



5214 Bonsai Street • Moorpark, CA 93021
 (888) 498-3242 • sales@hasco-inc.com
www.hasco-inc.com

MATERIALS: SEE DATA SHEET	CAGE CODE: 0T8L4	SCALE: NS	SIZE: -
FINISHES: SEE DATA SHEET	PART NO./DRAWING NO. HA6A2-30		REV: -