

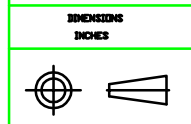
- NOTES:
1. ELECTRICAL:
 - 1.1 IMPEDANCE: 50Ω
 - 1.2 INSULATION RESISTANCE: 5000MΩ MIN
 - 1.3 FREQUENCY RANGE: DC~26.5GHz
 - 1.4 DIELECTRIC WITHSTANDING VOLTAGE: 1000V MAX AT SEA LEVEL
 - 1.5 VSWR ≤ 1.35:1 @ DC-26.5GHz
 - 1.6 INSERTION LOSS: ≤ 1.5dB @ 26.5GHz

2. ENVIRONMENTAL:
 TEMPERATURE RANGE: -55° to +85°

3. CONNECTOR MATERIAL AND FINISH:
 BODY: STAINLESS STEEL TYPE 303, PASSIVATE
 NUT: STAINLESS STEEL TYPE 303, PASSIVATE
 CENTER CONTACT: BERYLLIUM COPPER
 , GOLD PLATING
 DIELECTRIC: PTFE, N/A

THIS DRAWING IS A CONTROLLED DOCUMENT.		DWN	DWP	25/04/2023		
		CHK				
		APVD				
		PRODUCT SPEC				
		APPLICATION SPEC				
		WEIGHT				
		CUSTOMER DRAWING	SCALE	1:1	SHEET	1 OF 1
					RVE	1

HASC0 HyTech Associates Sales Company, Inc		
NAME HULL190 @Series		
26.5GHz Ultra Low Loss Flexible Cable Assemblies with Excellent Phase Stability vs. Flexure & Temperature		
SIZE	CAGE CODE	DRAWING NO
A3	0T8L4	HULL190-S1P-S1P-30



MATERIAL: SEE TABLE

0 PLC	±0.05
1 PLC	±0.10
2 PLC	±0.15
3 PLC	±
4 PLC	±
ANGLES 90°	

FINISH: SEE TABLE