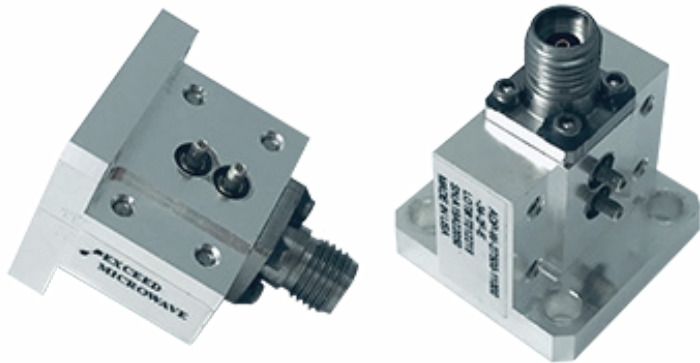


Part No:

# ADP-W-27500-11000-34-2F-E



## WR-34 to 2.92mm Female Waveguide to Coax End Launch Adapter • 22 GHz to 33 GHz



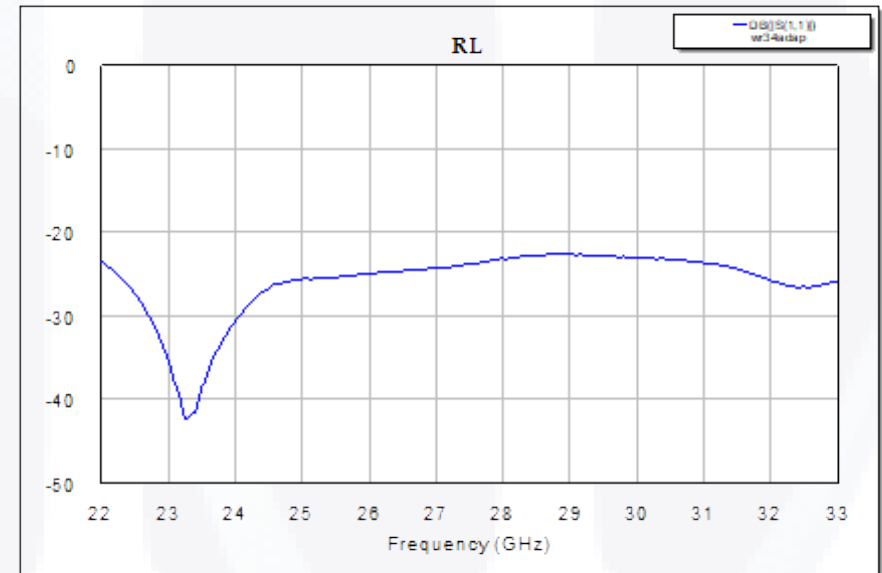
The ADP-W-27500-11000-34-2F-E is a WR-34 to 2.92mm female waveguide to coax adapter which operates across the entire WR-34 frequency band of 22 GHz to 33 GHz with return loss of 20dB minimum. WR-34/UG1530/U Flange.

### Key Features of the ADP-W-27500-11000-34-2F-E:

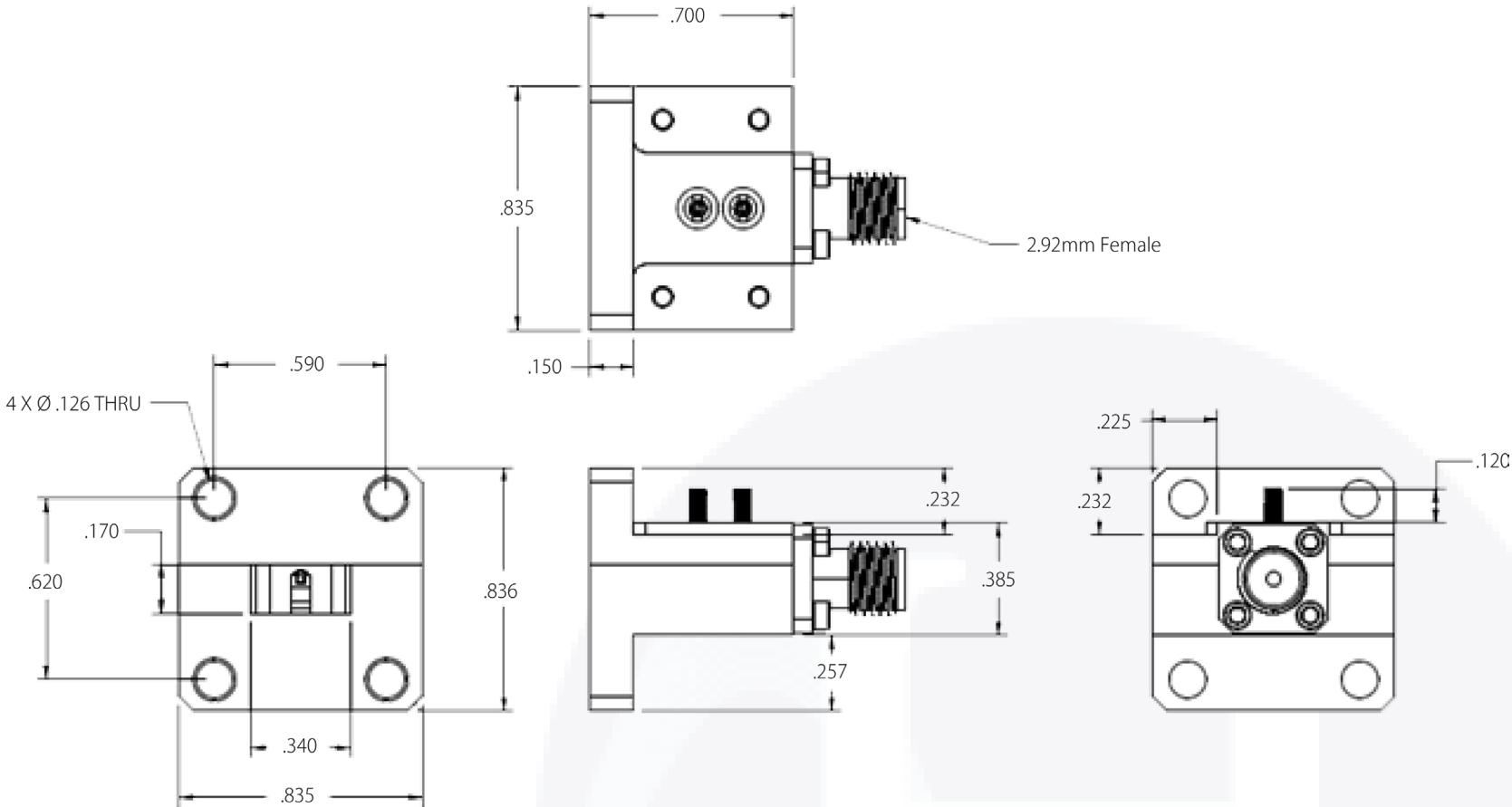
- 20dB return loss across entire WR-34 frequency band
- Low Pass-band Insertion loss

### Parameters



Pass-Band Frequency	22 GHz to 33 GHz
Insertion Loss	<0.4 dB
Return Loss	20dB Minimum
Operating Temperature	-25°C to +65°C
Housing Material	Aluminum, Silver Plated
Flange	WR-34/UG1530/U
Weight	15g



To view online, go to: <https://www.hasco-inc.com/adapters/adapters-waveguide/wr-34-to-2-92mm-female-waveguide-to-coax-adapter-right-angle-design-22-ghz-to-33-ghz-wr-34-ug1530-u-flange/>



To view online, go to: <https://www.hasco-inc.com/adapters/adapters-waveguide/wr-34-to-2-92mm-female-waveguide-to-coax-adapter-right-angle-design-22-ghz-to-33-ghz-wr-34-ug1530-u-flange/>

LTR	DESCRIPTION	DATE	APPR.	DRAWN BY: ABC	CHECKED BY: ABC	 		5214 Bonsai Street Moorpark, CA 93021 (888) 498-3242 sales@hasco-inc.com <a href="http://www.hasco-inc.com">www.hasco-inc.com</a>	
-	RELEASE	12/16	TAC	APPROVED BY: ABC					
				THESE DRAWINGS AND SPECIFICATIONS ARE THE PROPERTY OF HASCO COMPONENTS AND SHALL NOT BE REPRODUCED, COPIED NOR USED - IN WHOLE OR IN PART - AS THE BASIS FOR THE MANUFACTURE OR SALE OF OTHER ITEMS WITHOUT THE EXPRESS, WRITTEN PERMISSION OF HASCO COMPONENTS.		MATERIALS:	CAGE CODE:	SCALE:	SIZE:
				TOLERANCES - UNLESS OTHERWISE NOTED:		SEE DATA SHEET	OT8L4	N/A	-
				DECIMALS                      INCHES                      MM .X"                                    .075"                              [1.9] .XX"                                  .050"                              [1.3] .XXX"                                .030"                              [0.76]		FINISHES:	PART NO./DRAWING NO.		REV:
THIS DRAWING IS A CONTROLLED DOCUMENT						SEE DATA SHEET	<b>ADP-W-27500-11000-34-2F-E</b>		-