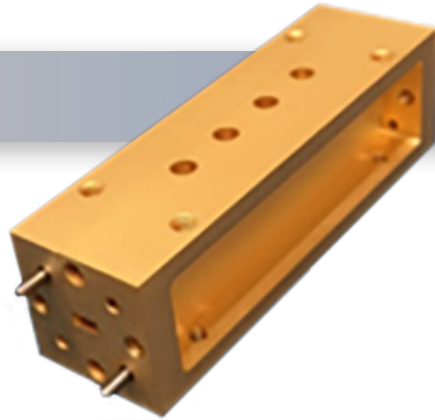


Part No:

BPF-WH3-64250-1500-4-15



WR-15 V-Band Band-Pass Filter • 63.5-65 GHz

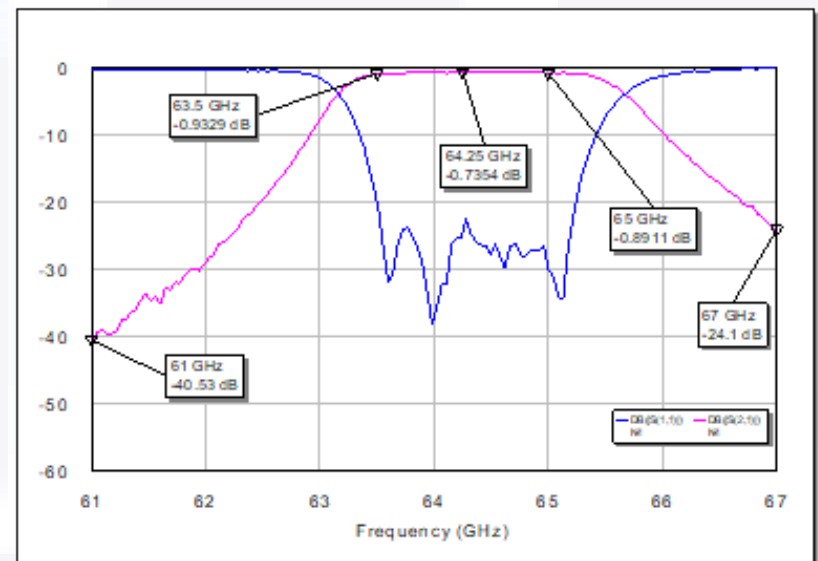
The BPF-WH3-64250-1500-4-15 is a WR-15 V-Band Band Pass Filter with low insertion loss. It is a 4 section filter using TE103 mode resonators which provides the low insertion loss even with the narrow bandwidth. Between 63.5-65 GHz, the filter has <1 dB insertion loss, <0.3 dB insertion loss flatness, and >20dB return loss. Input and output are WR-15 UG385/U.

Key Features of the BPF-WH3-64250-1500-4-15:

- Narrow bandwidth
- Low Insertion Loss

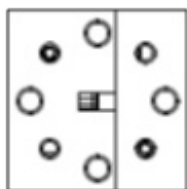
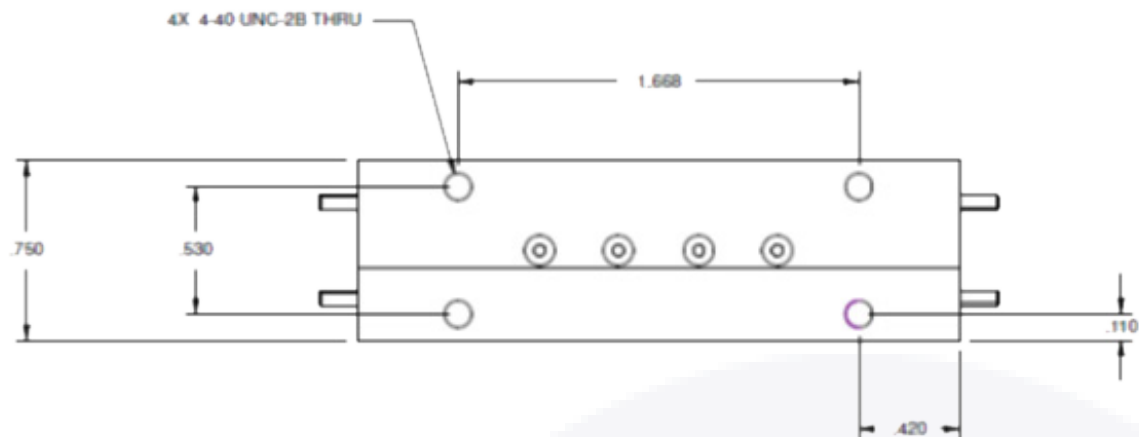
Parameters

Pass-Band Frequency	63.5-65 GHz
Insertion Loss	<1 dB
Insertion Loss Flatness	<0.3 dB
Return Loss	>21 dB
Rejection @ 61 GHz	>40dB
Rejection @ 67 GHz	>20dB
Operating Temperature	-50°C to +85°C
Material	Gold Plated Aluminum 6061
Weight	45g

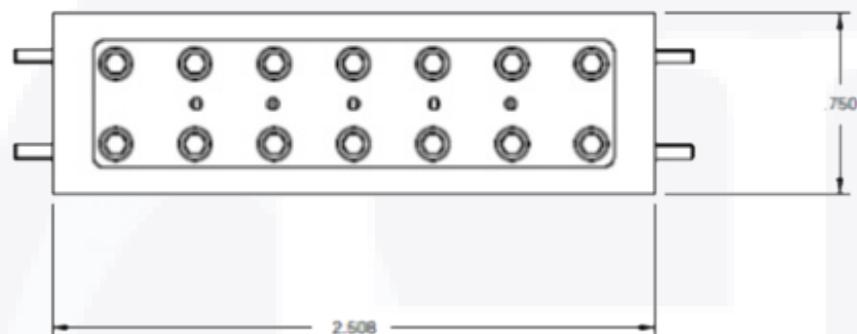


To view online, go to: <https://www.hasco-inc.com/filters/wr-15-v-band-band-pass-filter-with-low-insertion-loss-63-5-35-ghz/>



BPF-WH3-64250-1500-4-15 | Outline Drawing



WR15 WAVEGUIDE
UG385U FLANGE



To view online, go to: <https://www.hasco-inc.com/filters/wr-15-v-band-band-pass-filter-with-low-insertion-loss-63-5-35-ghz/>

LTR	DESCRIPTION	DATE	APPR.	DRAWN BY: ABC	CHECKED BY: ABC	 		5214 Bonsai Street Moorpark, CA 93021 (888) 498-3242 sales@hasco-inc.com www.hasco-inc.com	
-	RELEASE	12/16	TAC	APPROVED BY: ABC					
				THESE DRAWINGS AND SPECIFICATIONS ARE THE PROPERTY OF HASCO COMPONENTS AND SHALL NOT BE REPRODUCED, COPIED NOR USED - IN WHOLE OR IN PART - AS THE BASIS FOR THE MANUFACTURE OR SALE OF OTHER ITEMS WITHOUT THE EXPRESS, WRITTEN PERMISSION OF HASCO COMPONENTS.		MATERIALS:	CAGE CODE:	SCALE:	SIZE:
				TOLERANCES - UNLESS OTHERWISE NOTED:		SEE DATA SHEET	OT8L4	N/A	-
				DECIMALS INCHES MM .X" .075" [1.9] .XX" .050" [1.3] .XXX" .030" [0.76]		FINISHES:	PART NO./DRAWING NO.		REV:
THIS DRAWING IS A CONTROLLED DOCUMENT						SEE DATA SHEET	BPF-WH3-64250-1500-4-15		-