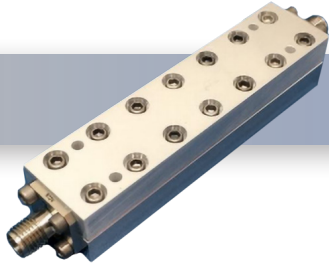


Part No:

LPF-C-10000-19-SF-SF



X-Band Low Pass Filter • *DC-10 GHz*

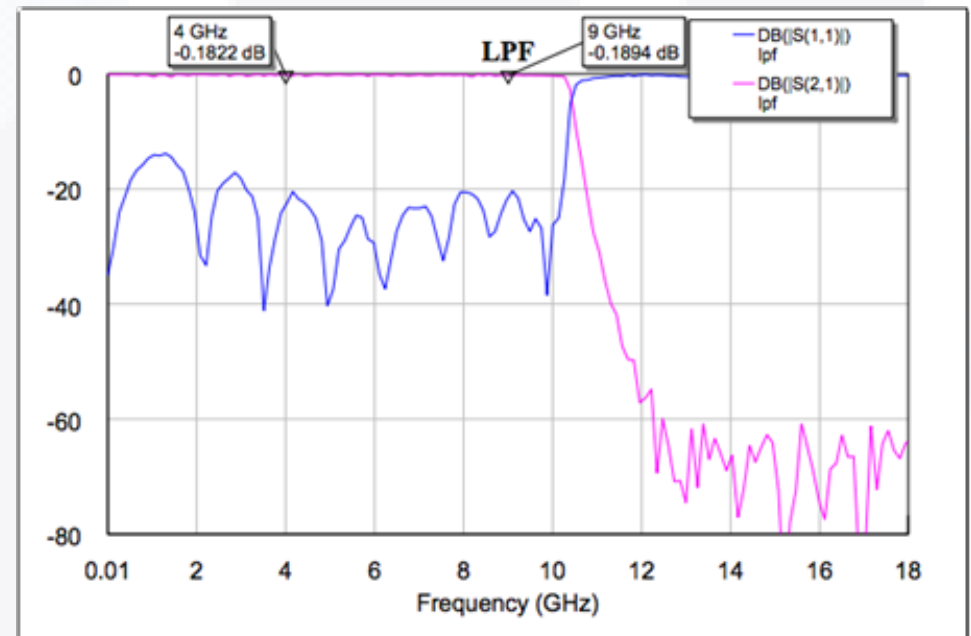
The LPF-10000-19-SF-SF is an X-Band low pass filter with cutoff at 10 GHz. It provides insertion loss of <0.2 dB up to 9 GHz. Rejection from 13-18 GHz is > 60 dB

Key Features of the LPF-C-10000-19-SF-SF:

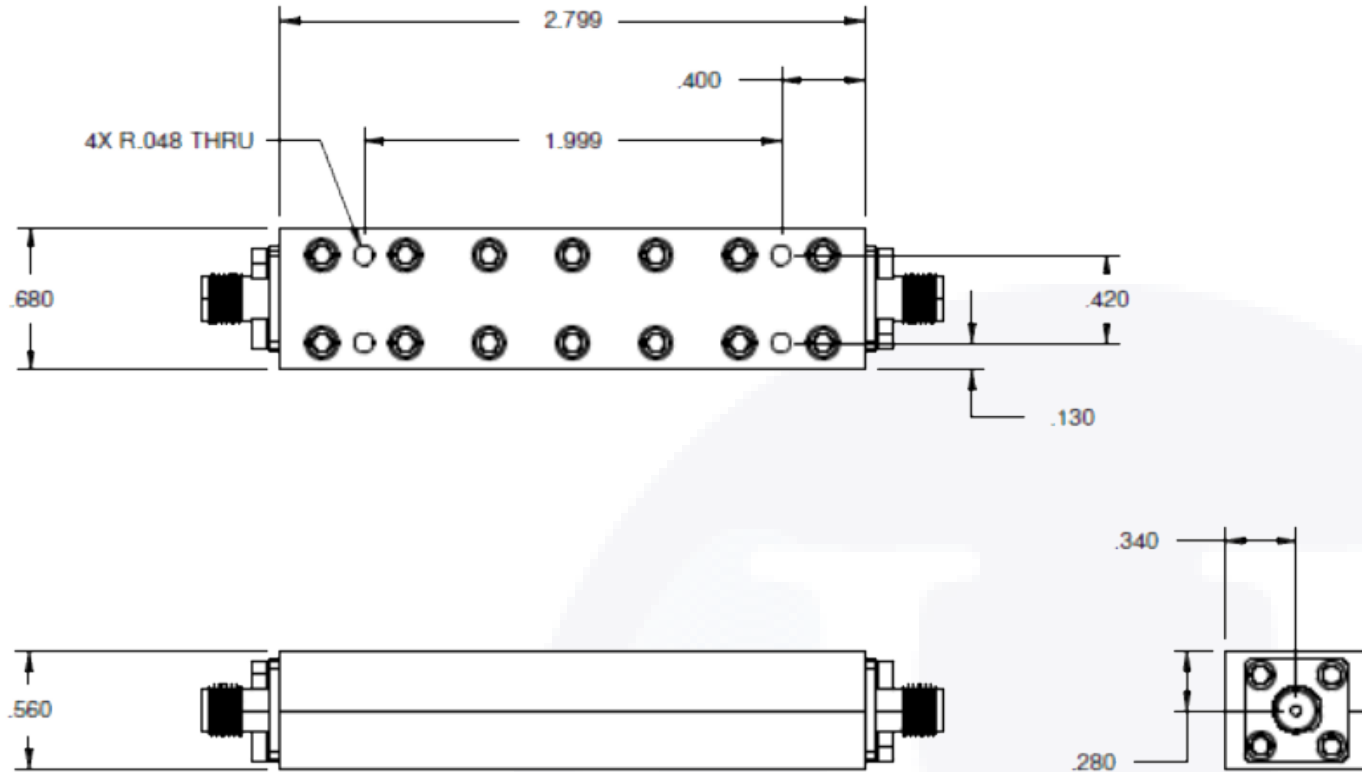
- Low Pass-band Insertion Loss
- Good Return Loss



Parameters

| | |
|-----------------------|--------------------|
| Pass-Band Frequency | DC - 10 GHz |
| Insertion Loss | <0.2 dB |
| Return Loss | >20dB @ 4-9 GHz |
| Rejection @ 13-18 GHz | >60dB |
| Operating Temperature | -50°C to +85°C |
| Material | Chem Film Aluminum |
| Weight | 55g |



LPF-C-10000-19-SF-SF | DC-10 GHz | Outline Drawing



| | | | | | | | | | | | | | | | | | | | | |
|---------------------------------------|-------------|--------|-------|--|-----------------------------|---|------------|---|-------|-------|-------|------|-------|-------|-------|-------|--------|-----------|----------------------|------|
| LTR | DESCRIPTION | DATE | APPR. | DRAWN BY: ABC | CHECKED BY: ABC |   | | 5214 Bonsai Street Moorpark, CA 93021 (888) 498-3242 sales@hasco-inc.com www.hasco-inc.com | | | | | | | | | | | | |
| - | RELEASE | 12/16 | TAC | APPROVED BY: ABC | | | | | | | | | | | | | | | | |
| | | | | THESE DRAWINGS AND SPECIFICATIONS ARE THE PROPERTY OF HASCO COMPONENTS AND SHALL NOT BE REPRODUCED, COPIED NOR USED - IN WHOLE OR IN PART - AS THE BASIS FOR THE MANUFACTURE OR SALE OF OTHER ITEMS WITHOUT THE EXPRESS, WRITTEN PERMISSION OF HASCO COMPONENTS. | | MATERIALS: | CAGE CODE: | SCALE: | SIZE: | | | | | | | | | | | |
| | | | | | | SEE DATA SHEET | OT8L4 | N/A | - | | | | | | | | | | | |
| | | | | TOLERANCES - UNLESS OTHERWISE NOTED: <table border="0"> <tr> <td>DECIMALS</td> <td>INCHES</td> <td>MM</td> </tr> <tr> <td>.X"</td> <td>.075"</td> <td>[1.9]</td> </tr> <tr> <td>.XX"</td> <td>.050"</td> <td>[1.3]</td> </tr> <tr> <td>.XXX"</td> <td>.030"</td> <td>[0.76]</td> </tr> </table> | | DECIMALS | INCHES | MM | .X" | .075" | [1.9] | .XX" | .050" | [1.3] | .XXX" | .030" | [0.76] | FINISHES: | PART NO./DRAWING NO. | REV: |
| DECIMALS | INCHES | MM | | | | | | | | | | | | | | | | | | |
| .X" | .075" | [1.9] | | | | | | | | | | | | | | | | | | |
| .XX" | .050" | [1.3] | | | | | | | | | | | | | | | | | | |
| .XXX" | .030" | [0.76] | | | | | | | | | | | | | | | | | | |
| THIS DRAWING IS A CONTROLLED DOCUMENT | | | | SEE DATA SHEET | LPF-C-10000-19-SF-SF | | - | | | | | | | | | | | | | |