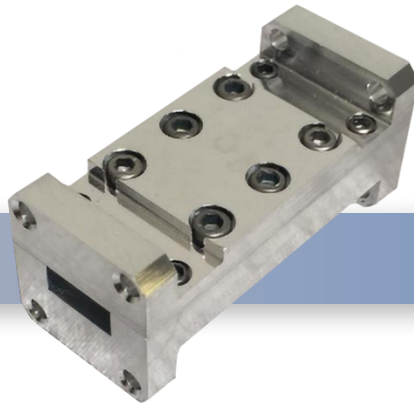


Part No:

LPF-W-00055



WR-42 K-Band Low Pass Filter • 18-25 GHz

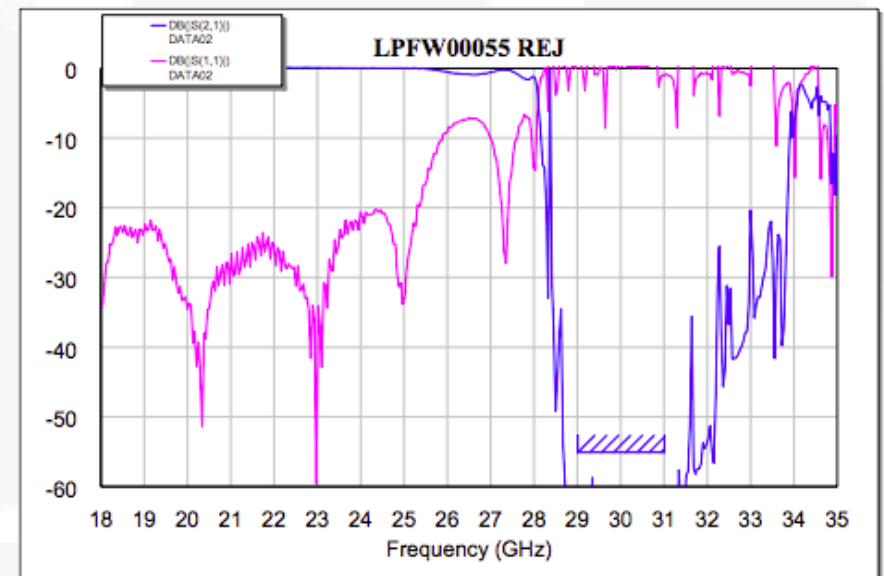
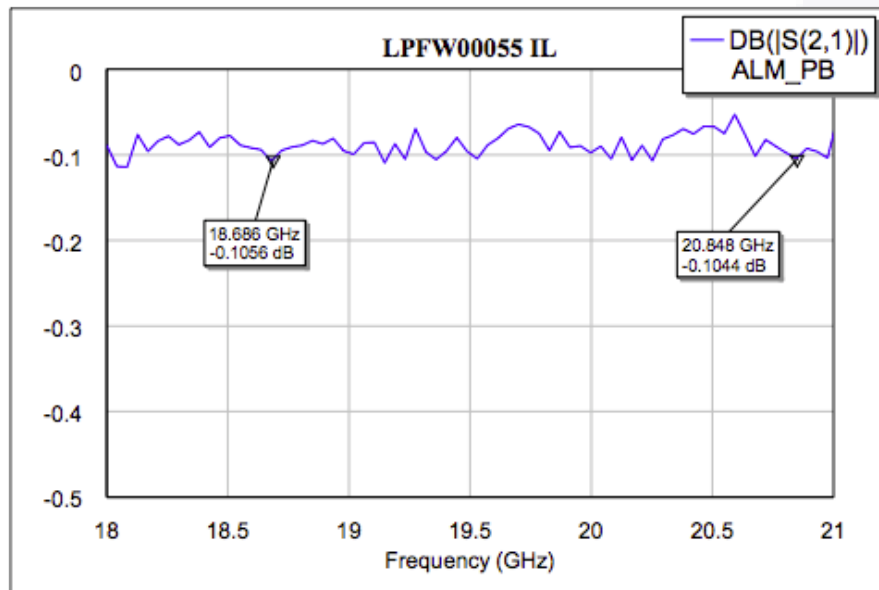
The LPF-W-00055 is a K-Band WR-42 waveguide low pass filter specifically designed to reject higher order modes between 29-31 GHz with a pass-band from 18-25 GHz. It provides very low insertion loss 0.1dB and >20dB return loss. Rejection from 29-31 GHz is >55dB. This filter provides sharp, deep rejection in a small size.

Key Features of the LPF-W-00055:

- Low Pass-band Insertion Loss
- >55dB rejection
- Filter Finish: Conversion Coating MIL-DTL-5541, Type II, C13

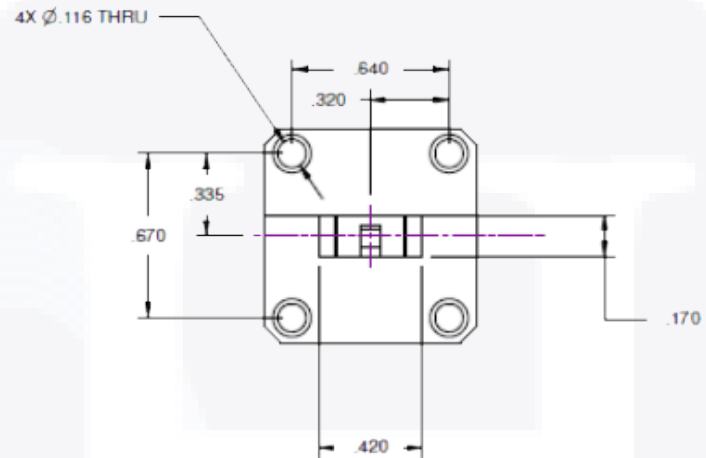
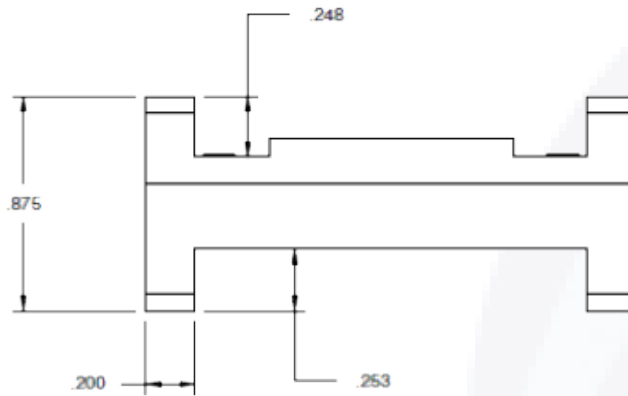
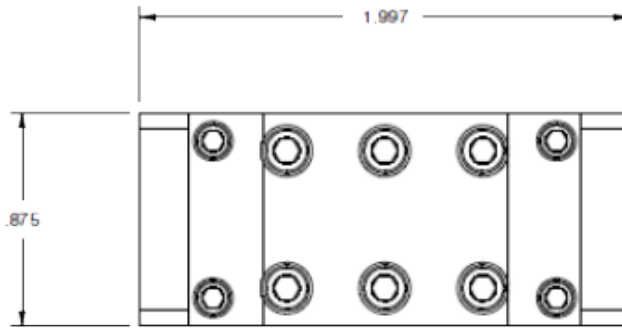
Parameters

Pass-Band Frequency	18 - 25 GHz
Insertion Loss	0.1dB
Return Loss	>20dB @ 18-25 GHz
Rejection @ 29-31 GHz	>55dB
Operating Temperature	-50°C to +85°C
Material	Chem Film Aluminum
Weight	35g





To view online, go to: <https://www.hasco-inc.com/filters/wr-42-18-ghz-to-25-ghz-lowpass-filter-55-db-rejection-from-29-to-31-ghz/>

LPF-W-00055 | 18-25 GHz | Outline Drawing



To view online, go to: <https://www.hasco-inc.com/filters/wr-42-18-ghz-to-25-ghz-lowpass-filter-55-db-rejection-from-29-to-31-ghz/>

LTR	DESCRIPTION	DATE	APPR.	DRAWN BY: ABC	CHECKED BY: ABC	 	5214 Bonsai Street Moorpark, CA 93021 (888) 498-3242 sales@hasco-inc.com www.hasco-inc.com														
-	RELEASE	12/16	TAC	APPROVED BY: ABC																	
				THESE DRAWINGS AND SPECIFICATIONS ARE THE PROPERTY OF HASCO COMPONENTS AND SHALL NOT BE REPRODUCED, COPIED NOR USED - IN WHOLE OR IN PART - AS THE BASIS FOR THE MANUFACTURE OR SALE OF OTHER ITEMS WITHOUT THE EXPRESS, WRITTEN PERMISSION OF HASCO COMPONENTS.			MATERIALS:	CAGE CODE:	SCALE:	SIZE:											
				TOLERANCES - UNLESS OTHERWISE NOTED:			SEE DATA SHEET	OT8L4	N/A	-											
				<table border="0"> <tr> <td>DECIMALS</td> <td>INCHES</td> <td>MM</td> </tr> <tr> <td>.X"</td> <td>.075"</td> <td>[1.9]</td> </tr> <tr> <td>.XX"</td> <td>.050"</td> <td>[1.3]</td> </tr> <tr> <td>.XXX"</td> <td>.030"</td> <td>[0.76]</td> </tr> </table>			DECIMALS	INCHES	MM	.X"	.075"	[1.9]	.XX"	.050"	[1.3]	.XXX"	.030"	[0.76]	FINISHES:	PART NO./DRAWING NO.	REV:
DECIMALS	INCHES	MM																			
.X"	.075"	[1.9]																			
.XX"	.050"	[1.3]																			
.XXX"	.030"	[0.76]																			
THIS DRAWING IS A CONTROLLED DOCUMENT							SEE DATA SHEET	LPF-W-00055	-												