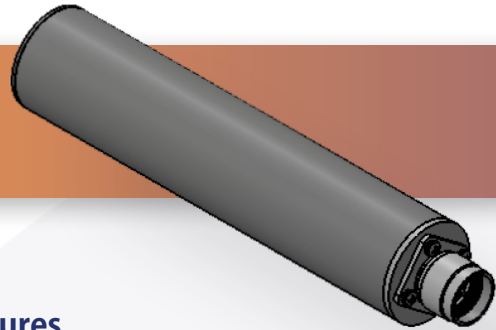


Part No:

HAD-1450-02D-06



Dipole Antenna with Type N Male Connector - 1450 - 2400 MHz

Features

- DC Grounded
- Hermetically Sealed
- Wall mounting kit included

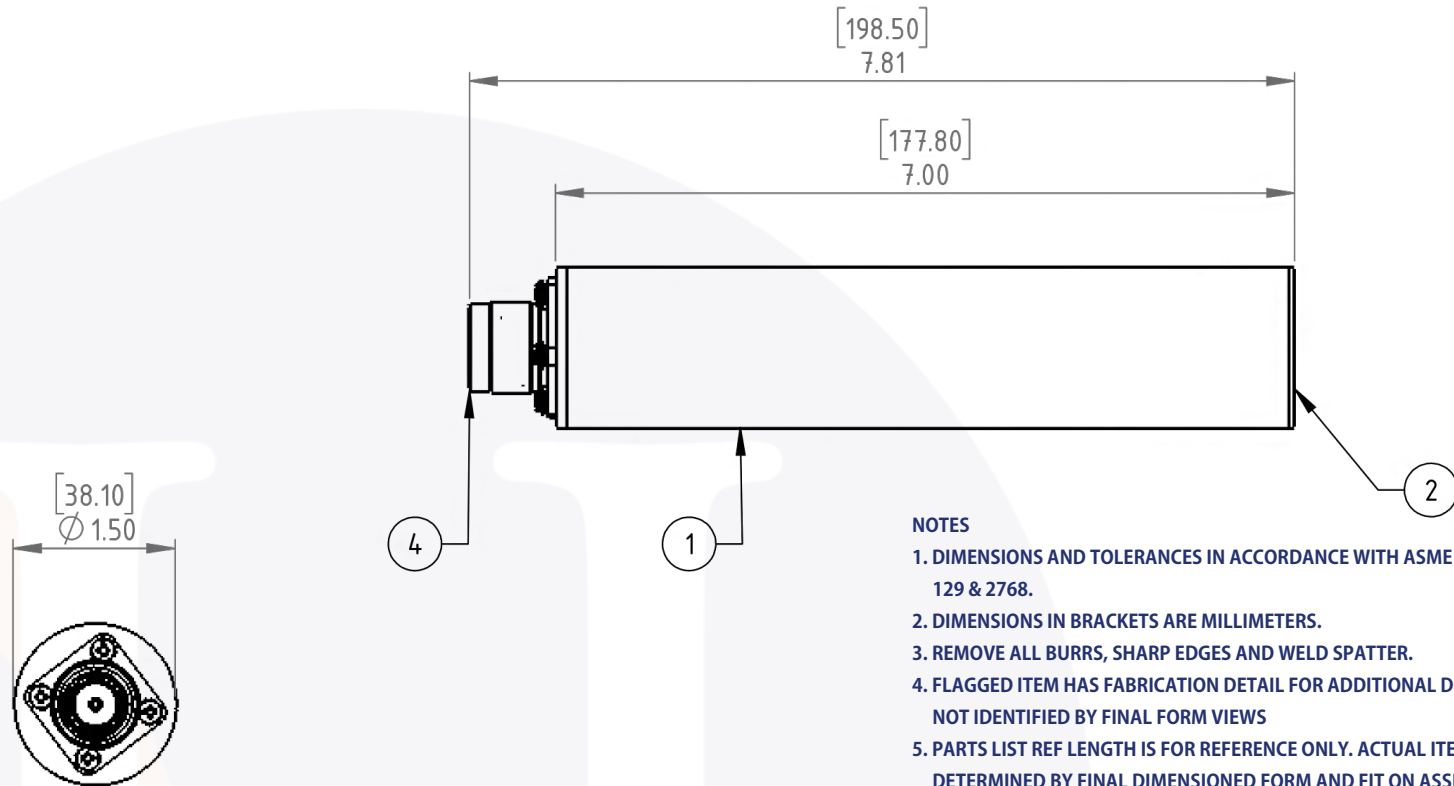
The HASCO **HAD-1450-02D-06** is a dipole antenna with a Type N male connector rated for 1450 - 2400 MHz.

Electrical

- Impedance 50 Ω
- Frequency Range 1450 - 2400 MHz
- VSWR 2.2:1
- Power 5 Watts Max
- Azimuth Omni
- Elevation Dipole

Item Number	Description
1	Radome
2	Cap, Radome
3	Base
4	CONN N RCPT STR 50 OHM Solder
5	#4-40, PANHD, 1/4" L, SS
6	#4 FLT Washer, SS
7	#4 Split Washer, SS

Dipole Antenna with Type N Male Connector | 1450 - 2400 MHz | Outline Drawing



NOTES

1. DIMENSIONS AND TOLERANCES IN ACCORDANCE WITH ASME Y14.5 - 2009 AND ISO 128, 129 & 2768.
2. DIMENSIONS IN BRACKETS ARE MILLIMETERS.
3. REMOVE ALL BURRS, SHARP EDGES AND WELD SPATTER.
4. FLAGGED ITEM HAS FABRICATION DETAIL FOR ADDITIONAL DIMENSIONS AND FEATURES NOT IDENTIFIED BY FINAL FORM VIEWS
5. PARTS LIST REF LENGTH IS FOR REFERENCE ONLY. ACTUAL ITEM LENGTHS ARE DETERMINED BY FINAL DIMENSIONED FORM AND FIT ON ASSEMBLY.
6. ASSEMBLE/WELD/MACHINE BEFORE PAINT.
7. APPLY FINISH PER SPEC IDENTIFIED IN TITLE BLOCK. COLOR IAW PROJECT REQUIREMENTS.
8. KEEP THREADS CLEAR OF PAINT.
9. ALL BENDS TO BE MIN RADII WITH RESPECT TO MATERIAL TYPE, GRADE AND THICKNESS.
10. STEP FILES AVAILABLE FOR REFERENCE. DRAWING REFERS TO MODEL REVISION.

LTR	DESCRIPTION	DATE	APPR.	DRAWN BY: NS	REVIEWED BY: JS
-	RELEASE	4/26	TC		APPROVED BY: TC
				THESE DRAWINGS AND SPECIFICATIONS ARE THE PROPERTY OF HASCO COMPONENTS AND SHALL NOT BE REPRODUCED, COPIED NOR USED - IN WHOLE OR IN PART - AS THE BASIS FOR THE MANUFACTURE OR SALE OF OTHER ITEMS WITHOUT THE EXPRESS, WRITTEN PERMISSION OF HASCO COMPONENTS.	
THIS DRAWING IS A CONTROLLED DOCUMENT					



5214 Bonsai Avenue • Moorpark, CA 93021
 (888) 498-3242 • sales@hasco-inc.com
www.hasco-inc.com

MATERIALS: SEE DATA SHEET	CAGE CODE: OT8L4	SCALE: N/A	SIZE: A
FINISHES: SEE DATA SHEET	PART NO./DRAWING NO. HAD-1450-02D-06		REV: -