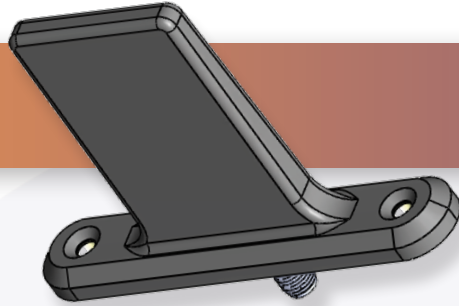


Part No:

HAD-1625-01M1-02



SMA Female Blade Antenna, L-Band - 1.625 - 2.5 GHz

Features

- **Low SWaP Design:** Aerodynamic profiles reduce drag, extending UAS flight times while maintaining structural integrity.
- **Broadband Performance:** Omnidirectional coverage supports real-time data transmission, with patterns optimized for small ground planes.
- **Durability and Compliance:** Rugged radomes protect against environmental stressors; NDAA-compliant materials ensure eligibility for U.S. government contracts.

The HASCO **HAD-1625-01M1-02** is an SMA Female Blade Antenna that operates within the L-Band.

HASCO offers a versatile family of blade antennas, each engineered for aerodynamic efficiency, durability, and seamless integration. All models feature SMA-F connectors, VSWR $\leq 2.0:1$, azimuth omnidirectional coverage, elevation patterns similar to a quarter-wave monopole on small ground planes, 1-3 dBi peak gain, and 20W CW power handling. Weights range from 0.43 oz (15.3 g) to 1.25 oz (35.1 g), minimizing impact on UAS flight dynamics.

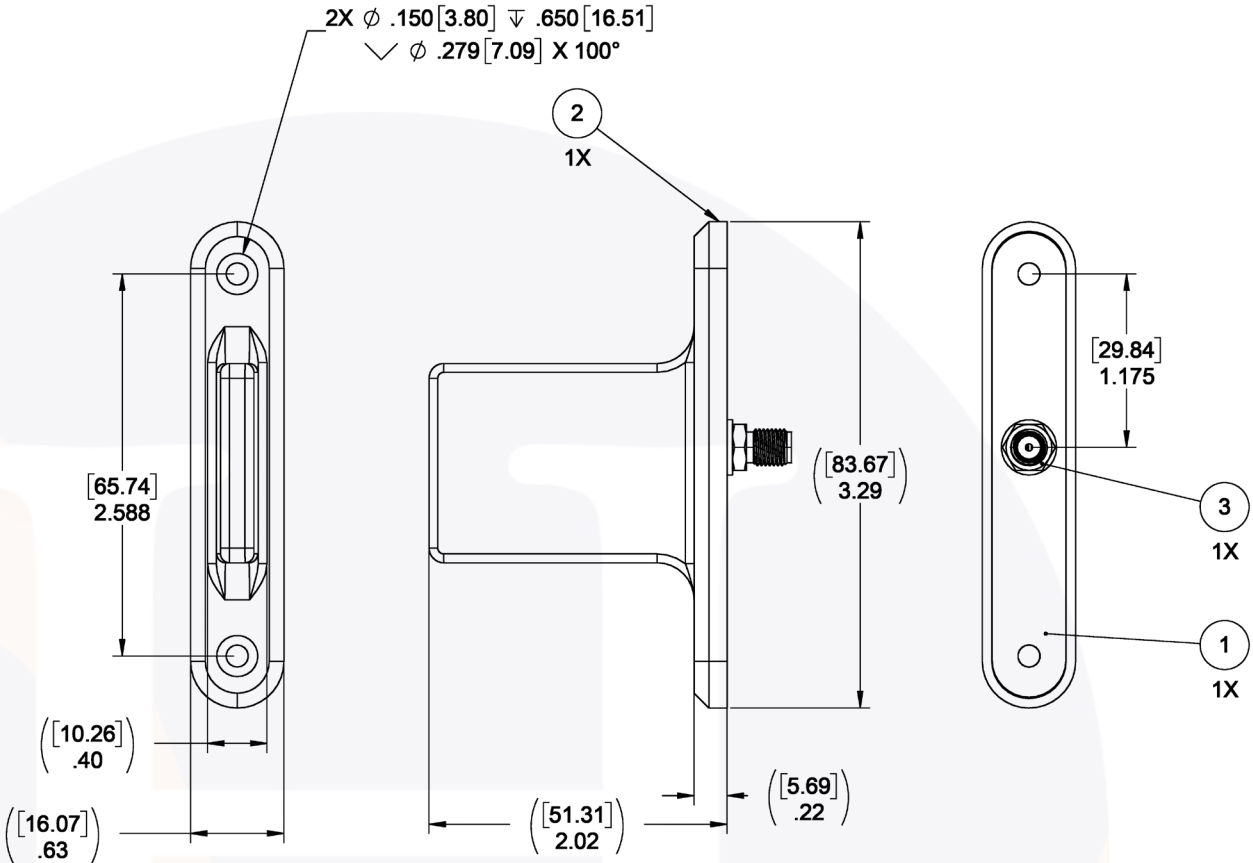
Electrical

• Impedence	50 Ω
• Frequency Range	1.625 - 2.5 GHz
• VSWR	2.0:1 Max
• Azimuth	Omnidirectional
• Elevation	Same as quarter wave monopole on small ground
• Gain	1 - 3 dBi Peak
• Power	20 Watts, CW

Mechanical

• Height	3.29 inch (83.67mm)
• Base Width	2.02 inch (51.31mm)
• Weight	0.67 oz (19.0 g)
• Mount	2-Hole

SMA Female Blade Antenna, L-Band | 1.625 - 2.5 GHz | Outline Drawing



ITEM	DESCRIPTION
1	Base
2	Radome
3	SMA Female Receptacle
4	Antenna Element PCB

LTR	DESCRIPTION	DATE	APPR.	DRAWN BY: NS	REVIEWED BY: JS
-	RELEASE	1/25	TC		APPROVED BY: TC
				THESE DRAWINGS AND SPECIFICATIONS ARE THE PROPERTY OF HASCO COMPONENTS AND SHALL NOT BE REPRODUCED, COPIED NOR USED - IN WHOLE OR IN PART - AS THE BASIS FOR THE MANUFACTURE OR SALE OF OTHER ITEMS WITHOUT THE EXPRESS, WRITTEN PERMISSION OF HASCO COMPONENTS.	
THIS DRAWING IS A CONTROLLED DOCUMENT					



5214 Bonsai Avenue • Moorpark, CA 93021
(888) 498-3242 • sales@hasco-inc.com
www.hasco-inc.com

MATERIALS: SEE DATA SHEET	CAGE CODE: 0T8L4	SCALE: N/A	SIZE: A
FINISHES: SEE DATA SHEET	PART NO./DRAWING NO. HAD-1625-01M1-02		REV: -