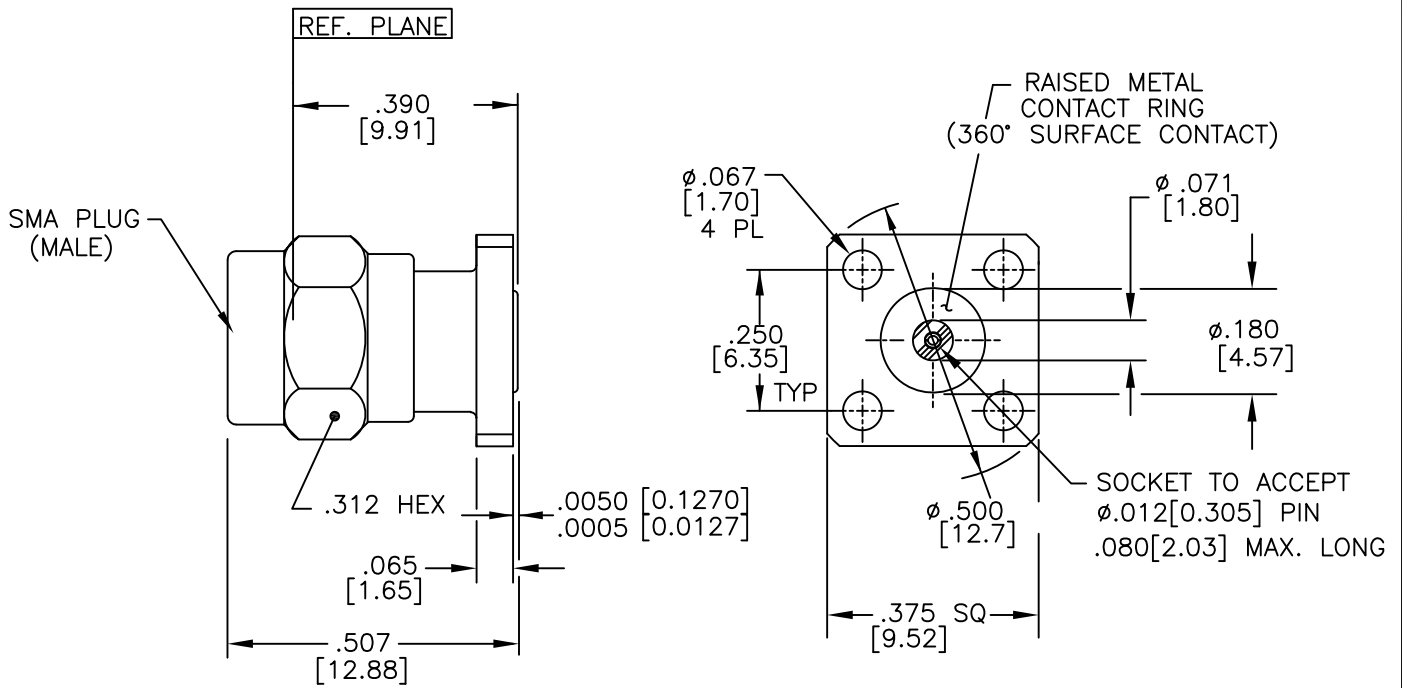


NOTE: Information herein is believed by Southwest Microwave, Inc. to be accurate. However, Southwest Microwave assumes no responsibility for any omissions or errors or inaccuracies for its use or for any infringements of patents or other rights of third parties that may result from its use. Data is intended for informational purpose only and does not constitute a contract of sale or any express or implied warranty, including any warranty of merchant ability or fitness for a particular purpose.



HOUSING / COUPLING NUT:	STEEL, CRES ALLOY UNS-S30300 PER ASTM-A582. PASSIVATE PER ASTM-A967-99
CONTACT:	BeCu UNS-C17300 PER ASTM-B-196/197 GOLD PLATE PER MIL-G-45204
DIELECTRIC: #1	VIRGIN TFE FLUOROCARBON PER ASTM-D-1710 AND ASTM-D-1457
DIELECTRIC: #2	ULTEM 1000 PER ASTM-D-5205
RETAINING RING:	BeCu UNS-C17300 PER ASTM-B-196/197
GASKET:	SILICONE RUBBER PER ZZ-R-765
ITEM	MATERIAL & FINISH

2. INTERFACE I.A.W. MIL-STD-348

1. ALL DIMENSIONS ARE IN INCHES, ALL ANGLES ARE IN DEGREES. DIMENSIONS SHOWN IN BRACKETS [XXX] ARE MILLIMETERS.

TOLERANCES ARE BASED UPON DIMENSIONS IN INCHES. METRIC DIMENSIONS ARE FOR "REFERENCE ONLY".

APPLICATION SPEC	91B52150
CONTACT GAGING SPEC	91B52104
PRODUCT SPEC	91B52089
PLUG INTERFACE SPEC	91B52002
SPECIFICATION GROUP	DRAWING NO.

NOTES: UNLESS OTHERWISE SPECIFIED

REV C	ECN: 8731	INIT: ROR	DATE: 2/23/08	APRVD. EJO	DATE: 1/5/09	TITLE SMA PLUG (MALE) 4 HOLE .375 SQUARE FLANGE MOUNT REAR SOCKET TO ACCEPT .012 DIA. PIN
						DRN BY: DK
						DATE: 12/95
						MODEL NO. 211-510SF
						SCALE: 3:1
						SHEET: 1 OF 1
						REV. C
						DWG. NO. 79B54101

O.L.-A-303 REV0