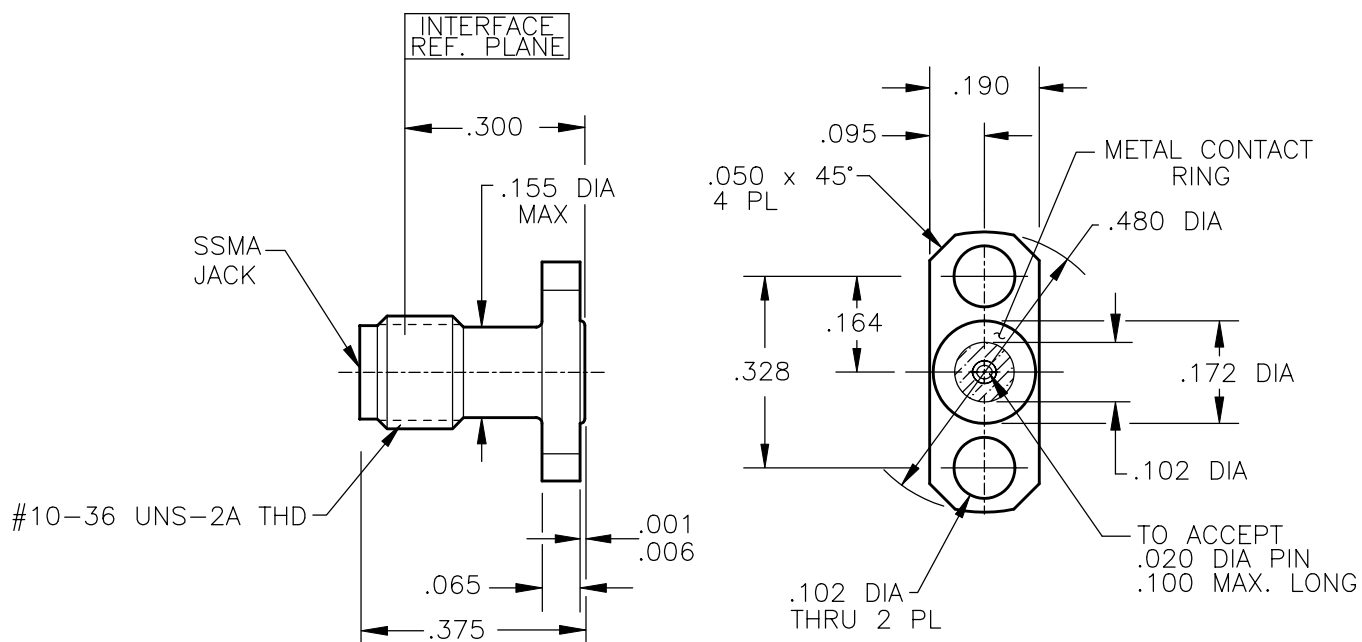


NOTE: Information herein is believed by Southwest Microwave, Inc. to be accurate. However, Southwest Microwave assumes no responsibility for any omissions or errors or inaccuracies for its use or for any infringements of patents or other rights of third parties that may result from its use. Data is intended for informational purpose only and does not constitute a contract of sale or any express or implied warranty, including any warranty of merchant ability or fitness for a particular purpose.




HOUSING:	STEEL, CRES ALLOY UNS-S30300 PER ASTM-A582. PASSIVATE PER QQ-P-35.
CONTACT:	BeCu UNS-C17300 PER ASTM-B-196/197 GOLD PLATE PER MIL-G-45204
DIELECTRIC INSULATOR:	VIRGIN TFE FLUOROCARBON PER ASTM-D-1710 AND ASTM-D-1457
BEAD RING:	ULTEM 1000 PER ASTM-D-5205
<b>MATERIAL &amp; FINISH</b>	

CONTACT GAGING SPEC.	91A58260
SPECIFICATIONS	91A58259
INTERFACE	91A52001
<b>SPECIFICATION GROUP</b>	<b>DRAWING NO.</b>

2. INTERFACE IN ACCORDANCE TO MIL-STD-348.  
1. ALL DIMENSIONS ARE IN INCHES, ALL ANGLES ARE IN DEGREES.

NOTES: UNLESS OTHERWISE SPECIFIED

REV A	RELEASE	DATE: 5/7/04	APRVD. BC	DATE: 5/7/04	TITLE MODEL 114-20SF SSMA JACK 2 HOLE .480 LONG FLANGE TO ACCEPT .020 DIA. PIN
 <b>Southwest Microwave, Inc.</b> 9055 South McKemy Street Tempe, Arizona 85284-2946 Telephone (480) 783-0201 Fax (480) 783-0360					DRN BY: SS DATE: 4/04 SCALE: 3:1 SHEET: 1 OF 1
					DWG. NO. <b>79A58153</b> REV. <b>A</b>