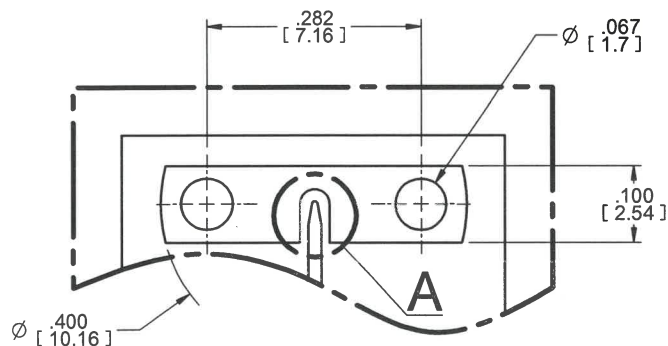


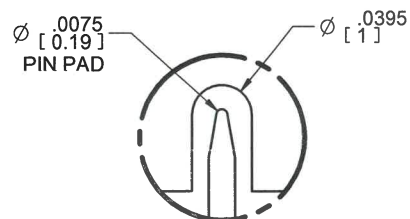
MODEL No.:

18359-001J

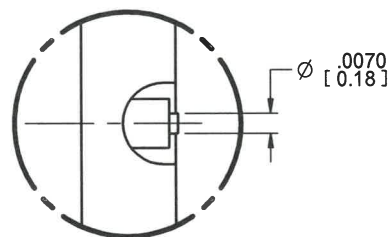
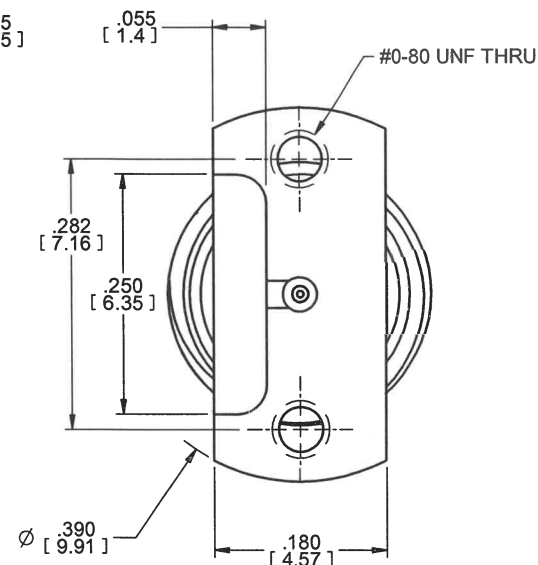
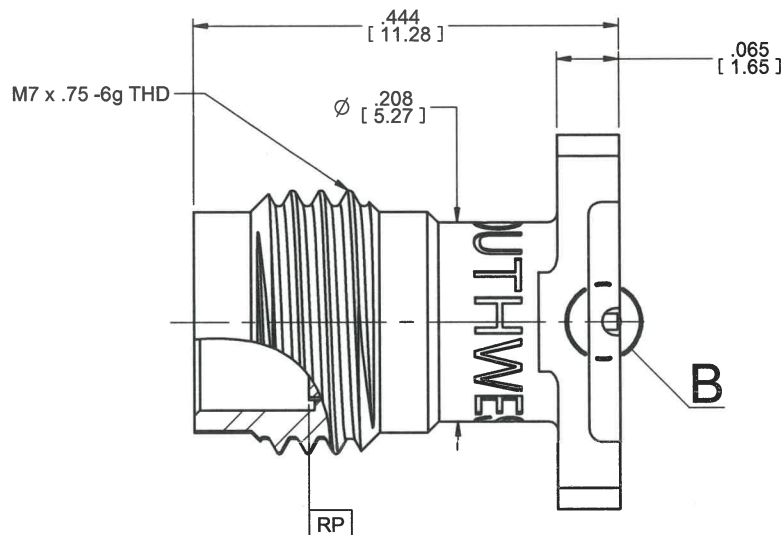
NOTE: Information herein is believed by Southwest Microwave, Inc. to be accurate. However, Southwest Microwave assumes no responsibility for any omissions or errors or inaccuracies for its use or for any infringements of patents or other rights of third parties that may result from its use. Data is intended for informational purpose only and does not constitute a contract of sale or any express or implied warranty, including any warranty of merchant ability or fitness for a particular purpose.



PCB MOUNTING DETAIL



DETAIL A



DETAIL B

DOCUMENT
CONTROL

NOV 30 2018

| | |
|------------------|---|
| HOUSING: | STEEL, CRES ALLOY UNS-30300 PER ASTM A582 PASSIVATED PER ASTM A967-99 |
| CONTACT: | BeCu UNS-C17300 PER ASTM B196/197 GOLD PLATE PER MIL-DTL-45204 |
| CAPTURE BEAD: | ULTEM 1000 PER ASTM D5205 |
| ITEM | MATERIAL & FINISH |

| | |
|---------------------|-------------|
| SPECIFICATIONS | 91R68773 |
| INTERFACE | 91R58312 |
| SPECIFICATION GROUP | DRAWING NO. |

1. ALL DIMENSIONS ARE IN INCHES. ALL ANGLES ARE IN DEGREES. DIMENSIONS SHOWN IN BRACKETS [XXX] ARE IN MILLIMETERS.

NOTES: UNLESS OTHERWISE SPECIFIED.

REV X2 PROTOTYPE RELEASE APRVD. DE DATE: 11/30/18



Southwest Microwave, Inc.
9055 South McKemy Street
Tempe, Arizona 85284-2946
Telephone (480) 783-0201
Fax (480) 783-0360

TITLE

18359-001J
1.85 J 2H VRT LAUNCH

DRN BY: JW DATE: 01/23/18
SCALE: 5:1
SHEET: 1 OF 1

DWG. NO.

79R68422

REV.
X2