

4 3 2 1

REVISIONS			
REV.	DESCRIPTION	DATE	APPROVED
A	INITIAL RELEASE	11/16/15	J. QU

MATERIAL & FINISH

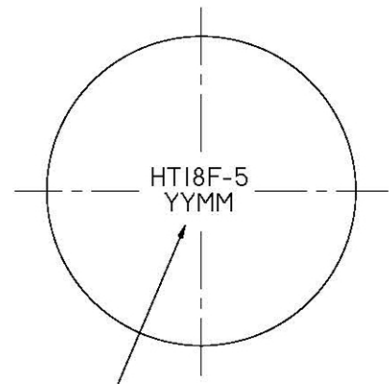
- 1 BODY: STAINLESS STEEL, PASSIVATED
- 2 CENTER CONTACT: BERYLLIUM COPPER ALLOY, GOLD PLATED
- 3 INSULATOR: PTFE/PEI
- 4 RADIATOR: ALUMINIUM, BLACK
- 5 RESISTANCE: BERYLLIUM OXIDE

ELECTRICAL DATA:

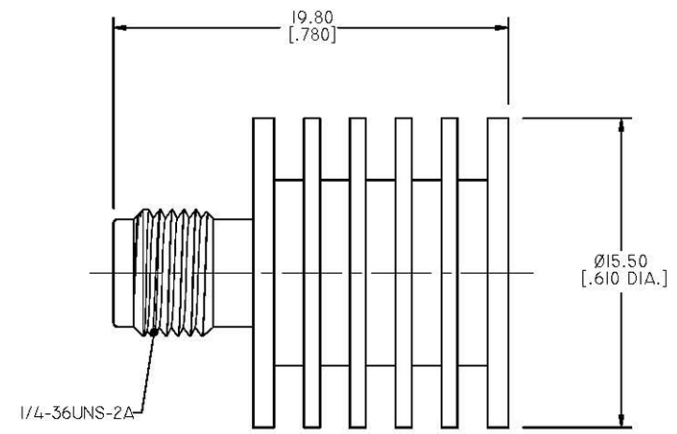
- 1 IMPEDANCE: 50 OHMS
- 2 FREQUENCY RANGE: DC~18 GHZ
- 3 VSWR: 1.15 MAX. AT DC~6 GHZ
1.20 MAX. AT 6~18 GHZ
- 4 AVERAGE POWER: 5 WATTS AVERAGE TO 25°C AMBIENT TEMPERATURE, DERATED LINEARLY TO 0.5W @ 125°C
- 5 PEAK POWER: 0.5KW (5μS PULSE WIDTH WITH 0.8% DUTY CYCLE)

ENVIRONMENTAL DATA:

- 1 TEMPERATURE RANGE: -55°C~+125°C
- 2 2011/65/EU (RoHS): COMPLIANT



HASCO PART NO.
DATE CODE



NOTES:

- 1 ALL SPECIFICATIONS ARE SUBJECT TO CHANGE WITHOUT NOTICE AT ANY TIME.
- 2 CUSTOMER OUTLINE DRAWING FOR REFERENCE ONLY.
- 3 THIS PRODUCT CONTAINS BERYLLIA CERAMIC INSIDE, WHICH IS POTENTIALLY HARMFUL TO THE ENVIRONMENT. DISPOSE OF CORRECTLY.

DRAWN	X. B. YANG	DATE	11/16/15
CHECKED	L. YANG	DATE	11/16/15
APPROVED	J. QU	DATE	11/16/15
UNLESS OTHERWISE SPECIFIED DIMENSIONS ARE IN MILLIMETERS, DIMENSIONS IN [] ARE IN INCHES FOR CUSTOMER REFERENCE ONLY UNLESS OTHERWISE SPECIFIED.		TOLERANCE ARE:	
.XX	±0.13 [0.005"]	THESE DRAWINGS AND SPECIFICATIONS ARE THE PROPERTY OF HASCO COMPONENTS AND SHALL NOT BE REPRODUCED, COPIED NOR USED - IN WHOLE OR IN PART - AS A BASIS FOR THE MANUFACTURE OR SALE OF OTHER ITEMS WITHOUT THE EXPRESS WRITTEN PERMISSION OF HASCO COMPONENTS	
.X	±0.20 [0.008"]		
X	±0.50 [0.019"]		
.X°	±1°		
X°	±2°		



HASCO, INC
COMPONENTS DISTRIBUTOR

5214 Bonsai Street
Moorpark, CA
(888) 498-3242
www.hasco-inc.com

TITLE	
COAXIAL TERMINATION SMA FEMALE, 5 WATTS, DC~18GHZ	

VIEW	PART NO.	
	HT18F-5	
SIZE	SCALE	SHEET
A3	4:1	1/1
REV.	A	

4 3 2 1