

Part No:

HT18M-1FX



1 Watt RF Load Termination with SMA Male Fixed Hex Nut Connector, DC-18 GHz

The HASCO **HT18M-1FX** is a fixed hex nut RF termination (also called RF load or dummy load) that operates from DC to 18 GHz and handles up to 1 Watt. This SMA termination/load has a male gender.

The HASCO **HT18M-1FX** is RoHS compliant.



RF load/terminations are indispensable components in many RF, microwave and millimeter wave systems where signal reflection from unused ports can potentially damage the device or reduce the signal integrity. By using a termination on an unused port with a matched load (dummy load), the incident energy will be absorbed with minimal reflection. These termination components are commonly used to terminate devices such as couplers, circulators, and switches. They are also widely used in measurement systems to ensure accurate results. HASCO offers a huge selection of RF, microwave and millimeter wave terminations up to 65 GHz with excellent performance over the entire operating range and power handling capabilities up to 800 Watt (CW).

Electrical

• Frequency Range	DC - 18 GHz
• VSWR	DC - 4 GHz 1.06:1 4 - 8 GHz 1.10:1 8-12.4 GHz 1.15:1 12.4-18 GHz 1.20:1
• Impedance	50 Ohms
• Power	1 Watt Average (Peak 1kW)
• Coefficient	±200ppm/C°

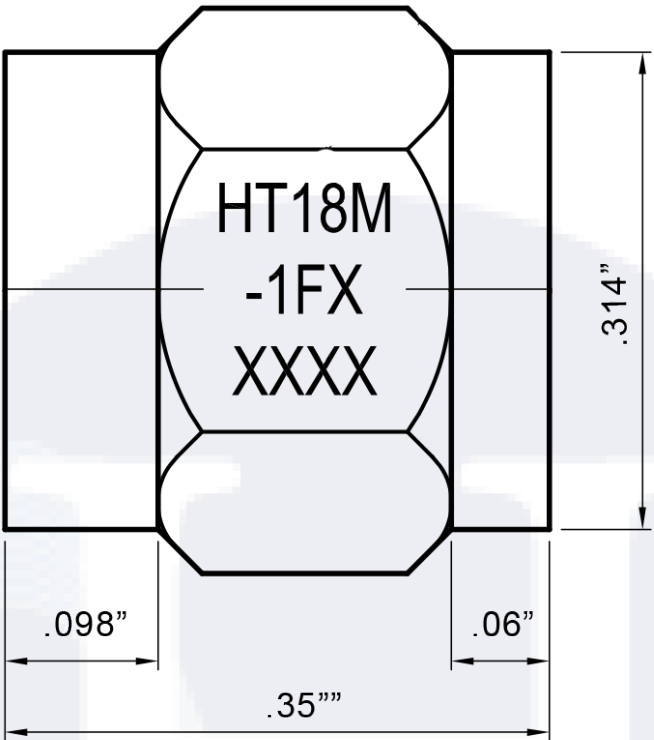
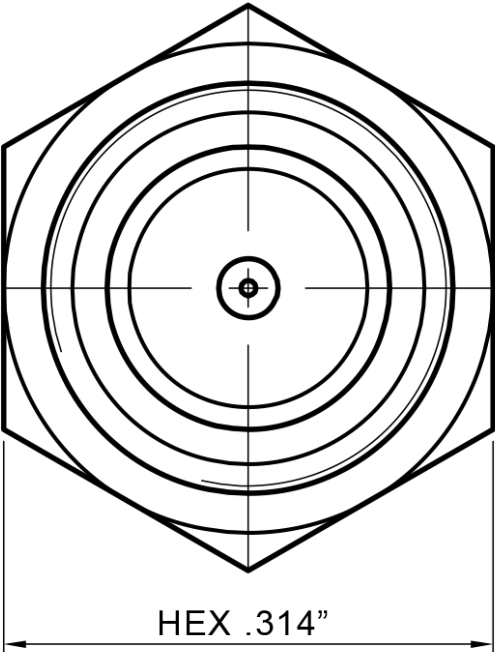
Environmental Data

• Temperature Range	-45°C - +125°C
---------------------	----------------

Material

• Body, Coupling Nut	Passivated Stainless Steel
• Center Contact, End Cap and Insert:	Gold Plated Brass
• Insulator	PTFE

To view online, go to: [1 Watt RF Load Termination with SMA Male Fixed Hex Nut Connector, DC-18 GHz](#)



LTR	DESCRIPTION	DATE	APPR.	DRAWN BY: ABC	CHECKED BY: ABC
-	RELEASE	12/16	TAC	APPROVED BY: ABC	
				THESE DRAWINGS AND SPECIFICATIONS ARE THE PROPERTY OF HASCO COMPONENTS AND SHALL NOT BE REPRODUCED, COPIED NOR USED - IN WHOLE OR IN PART - AS THE BASIS FOR THE MANUFACTURE OR SALE OF OTHER ITEMS WITHOUT THE EXPRESS, WRITTEN PERMISSION OF HASCO COMPONENTS.	
				TOLERANCES - UNLESS OTHERWISE NOTED:	
THIS DRAWING IS A CONTROLLED DOCUMENT					



5214 Bonsai Street • Moorpark, CA 93021
 (888) 498-3242 • sales@hasco-inc.com
www.hasco-inc.com

MATERIALS: SEE DATA SHEET	CAGE CODE: 0T8L4	SCALE: NS	SIZE: A
FINISHES: SEE DATA SHEET	PART NO./DRAWING NO. HT18M-1FX		REV: -