

Part No:

HT18M-1



1 Watt RF Load Termination with SMA Male Connector, DC-18 GHz

The HASCO **HT18M-1** is an RF termination (also called RF load or dummy load) that operates from DC to 18 GHz and handles up to 1 Watt. This SMA termination/load has a male gender.

The HASCO **HT18M-1** is RoHS compliant.



RF load/terminations are indispensable components in many RF, microwave and millimeter wave systems where signal reflection from unused ports can potentially damage the device or reduce the signal integrity. By using a termination on an unused port with a matched load (dummy load), the incident energy will be absorbed with minimal reflection. These termination components are commonly used to terminate devices such as couplers, circulators, and switches. They are also widely used in measurement systems to ensure accurate results. HASCO offers a huge selection of RF, microwave and millimeter wave terminations up to 65 GHz with excellent performance over the entire operating range and power handling capabilities up to 800 Watt (CW).

Electrical

- Frequency Range DC - 18 GHz
- VSWR DC - 4 GHz 1.06:1
4 - 8 GHz 1.10:1
8-18 GHz 1.15:1
- Impedance 50 Ohms
- Power 1 Watt Average

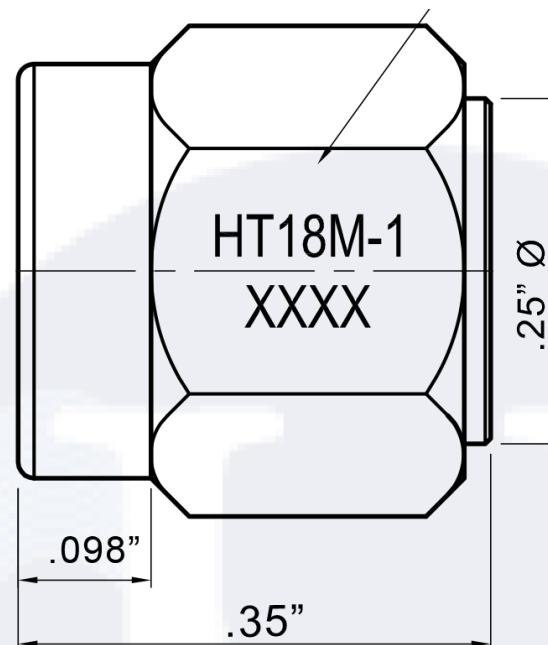
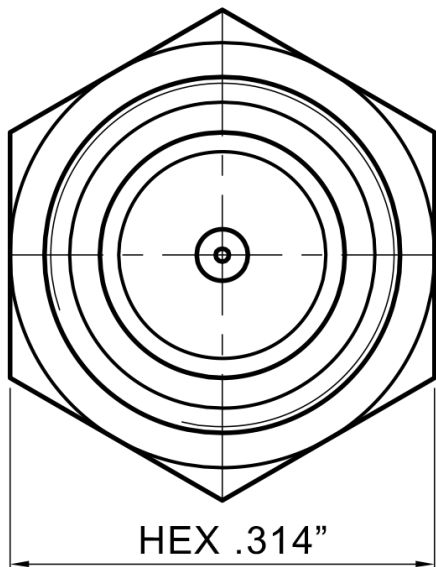
Environmental Data


- Temperature Range -45°C - +120°C

Material

- Body, Coupling Nut Passivated Stainless Steel
- Center Contact Gold Plated Brass
- Insulator PTFE

To view online, go to: [1 Watt RF Load Termination with SMA Male Connector, DC-18 GHz](#)



LTR	DESCRIPTION	DATE	APPR.	DRAWN BY: ABC	CHECKED BY: ABC	 5214 Bonsai Street • Moorpark, CA 93021 (888) 498-3242 • sales@hasco-inc.com www.hasco-inc.com			
-	RELEASE	12/16	TAC	APPROVED BY: ABC					
				THESE DRAWINGS AND SPECIFICATIONS ARE THE PROPERTY OF HASCO COMPONENTS AND SHALL NOT BE REPRODUCED, COPIED NOR USED - IN WHOLE OR IN PART - AS THE BASIS FOR THE MANUFACTURE OR SALE OF OTHER ITEMS WITHOUT THE EXPRESS, WRITTEN PERMISSION OF HASCO COMPONENTS.		MATERIALS: SEE DATA SHEET	CAGE CODE: 0T8L4	SCALE: NS	SIZE: A
				TOLERANCES - UNLESS OTHERWISE NOTED: ALL DIMS IN MILLIMETERS 1 PLACE ±0.20 ANGLE ±1.0° 2 PLACE ±0.10		FINISHES: SEE DATA SHEET	PART NO./DRAWING NO. HT18M-1		REV: -
THIS DRAWING IS A CONTROLLED DOCUMENT									