

SPECIFICATIONS

ELECTRICAL

FREQUENCY RANGE: _____ DC - 18 GHz

VSWR
 DC - 4 GHz _____ 1.05
 4 - 8 GHz _____ 1.10
 8 - 12.4 GHz _____ 1.15
 12.4 - 18 GHz _____ 1.20

IMPEDANCE _____ 50 OHMS

TEMPERATURE RANGE (°C) _____ -55 TO +125

POWER (AVG) _____ 2 WATTS
 POWER DERATES LINEARLY FROM +45°C TO <10% @ +125°C

POWER (PEAK) _____ 500 WATTS
 (<5 μ SEC PW, <1% DUTY CYCLE)

MECHANICAL

INNER CONDUCTOR: _____ BERYLLIUM COPPER PER
 ASTM B196 & B197.

OUTER CONDUCTOR: _____ STEEL, CORROSION RESISTANT PER
 ASTM A484 & A582, CLASS 303, COND. A.

DIELECTRIC: TEFLON PER ASTM D1710.

FINISH

INNER CONDUCTOR: _____ GOLD PLATED PER MIL-PRF-39012.

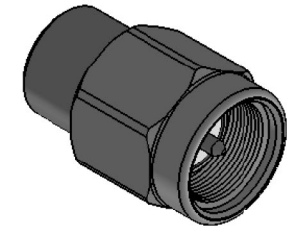
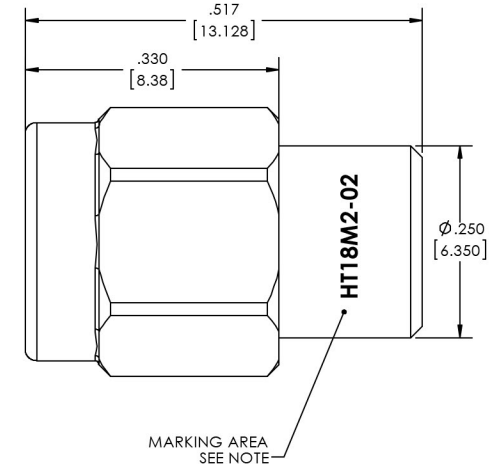
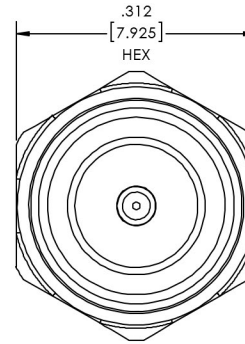
HOUSING/COUPLING NUT FINISH: _____ PASSIVATED SS

CONNECTOR INTERFACE COMPLIES WITH MIL-PRF-39012 AND MIL-STD-348
 FOR SMA MATING CHARACTERISTICS.

MARKING

PART LOOKS LIKE PRODUCT IMAGE ABOVE.
 PART MARKING ORIENTATION AND FORMAT AS SHOWN.
 MARKING TO BE AS LARGE AS POSSIBLE, CLEAR, READABLE, AND A BLACK COLOR.

REVISIONS				
REV	DESCRIPTION	ECO #	DATE	APPROVED
-	INITIAL RELEASE		14-256 7/8/14	T.KUHN



DRAWING PRACTICES PER ANSI Y14.5 94-110-100 & 100E		UNLESS OTHERWISE SPECIFIED TOLERANCES IN:		DRAWN DATE MCCORMICK 7/8/14		HASCO, INC. COMPONENTS DISTRIBUTOR 5214 Bonsai Street Moorpark, CA (888) 498-3242 www.hasco-inc.com
DIMENSIONS ARE IN INCHES AND APPLY BEFORE/AFTER PROCESSING		DECIMALS	INCH	MM	CHECKED DATE MCCORMICK 7/8/14	
SURFACE ROUGHNESS INCHES		X" .05" [1.27]	XX" .03" [.76]	XXX" .01" [.25]	ENG APPR DATE T.KUHN 7/8/14	
FINISH: SEE NOTES		ANGLES ±0°30'			THESE DRAWINGS AND SPECIFICATIONS ARE THE PROPERTY OF HASCO COMPONENTS AND SHALL NOT BE REPRODUCED, COPIED NOR USED - IN WHOLE OR IN PART - AS A BASIS FOR THE MANUFACTURE OR SALE OF OTHER ITEMS WITHOUT THE EXPRESS WRITTEN PERMISSION OF HASCO COMPONENTS	
MATERIAL: SEE NOTES		REMOVE ALL BURRS/SHARP W/ BREAK / R OF .003" TO .0005"			TITLE TERMINATION, SMA, MALE, DC-18GHZ, 2 WATTS AVG., 500 WATTS PEAK	
NOTE: THIS DRAWING INCORPORATES THIRD ANGLE PROJECTION.		UNLESS OTHERWISE NOTED DIAS CONCENTRIC <.003 T.I.R			DRAWING NUMBER HT18M2-02	
INTERPRET LAW ANSI Y14.5-1982		DO NOT SCALE PRINT			SIZE C CAGE CODE 0T8L4 DRAWING NUMBER HT18M2-02 REV - SCALE PLATED AREA SQ. IN SHEET 1 OF 1	