

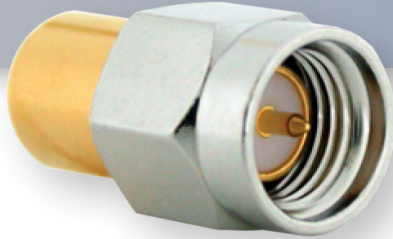
Part No:

# HT20M-1

Available with chain: HT20M-1C



## SMA Termination - DC to 20 GHz



### Electrical

- Impedance 50  $\Omega$
- Capacitance (pF/m) 95.1
- Frequency Range DC - 20 GHz
- Return Loss (GHz)
 

DC~4	4~12	12~20
32dB	25dB	20dB
- RF Power (Nominal) 1 Watt Average @ 25° C  
Derated linearly to 0.5 Watt at 125° C

### Environmental Data

- Operating Temperature -55° C - +85° C

### Material

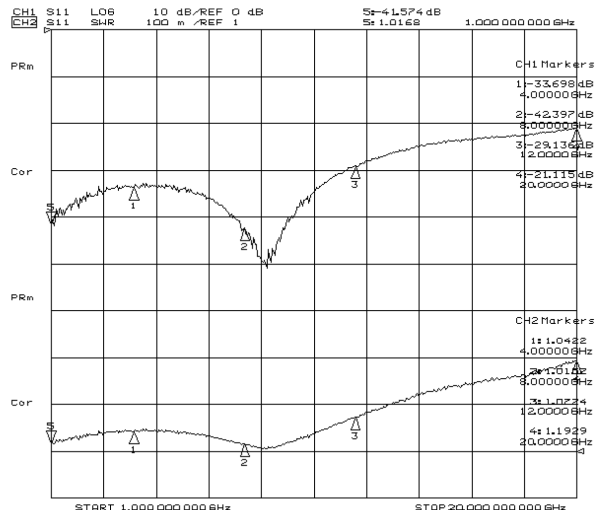
- Resistive Element Thin Film
- Resistor Substrate Alumina Ceramic
- Body Gold Plated Brass
- Hex Nut Ternary Alloy Plated Brass
- Center Contact Gold Plated Brass  
Per MIL-G-45204

The HT20M-1 is an RF Termination/Load operating from DC - 20 GHz.

The HT20M01 is RoHS Compliant.



RF load/terminations are indispensable components in many RF, microwave and millimeter wave systems where signal reflection from unused ports can potentially damage the device or reduce the signal integrity. HASCO offers a huge selection of RF, microwave and millimeter wave terminations up to 65 GHz with excellent performance over the entire operating range and power handling capabilities up to 800 Watt (CW).



To view this product online, go to: <https://www.hasco-inc.com/terminations/1-watt-rf-load-termination-with-sma-male-connector-dc-20-ghz/>