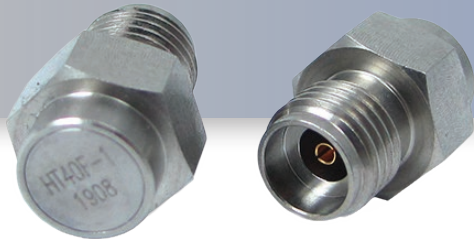


Part No:

# HT40F-1



## *1 Watt RF Load Termination with 2.92mm Female DC - 40 GHz*

The HASCO **HT40F-1** is an RF termination (also called RF load or dummy load) that operates from DC to 40 GHz and handles up to 1 Watt (CW). Our 2.92mm termination/load has a female gender. HT40M-1 termination offers 1.25:1 max VSWR.

The **HT40F-1** is RoHS Compliant.



RF load/terminations are indispensable components in many RF, microwave and millimeter wave systems where signal reflection from unused ports can potentially damage the device or reduce the signal integrity. By using a termination on an unused port with a matched load (dummy load), the incident energy will be absorbed with minimal reflection. These termination components are commonly used to terminate devices such as couplers, circulators, and switches. They are also widely used in measurement systems to ensure accurate results. HASCO offers a huge selection of RF, microwave and millimeter wave terminations up to 65 GHz with excellent performance over the entire operating range and power handling capabilities up to 800 Watt (CW).

### Electrical

• Frequency Range	DC - 40 GHz
• VSWR	1.25:1 MAX
• Power	1 Watt Ave (Derates linearly to 0.1 W @125°C)
• Peak Power	100 Watts (5μS Pulse Width with 0.5% Duty Cycle)
• Mating Cycles	500 Cycles Min.
• Impedence	50 Ohms

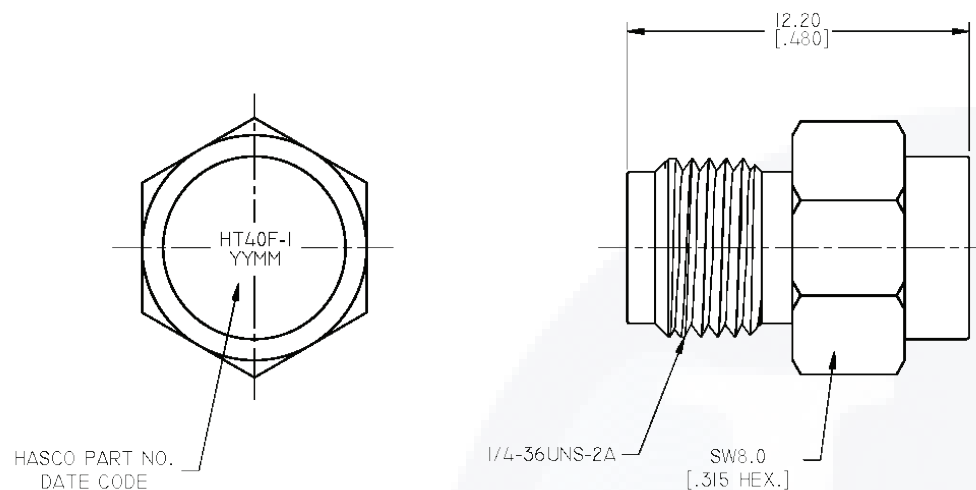
### Environmental Data

• Temperature Range	-55°C - +125°C
---------------------	----------------


### Material

• Body	Passivated Stainless Steel
• Center Contact	Gold Plated BeCu
• Insulator	PEI
• Resistance	Beryllium Oxide

To view online, go to: <https://www.hasco-inc.com/terminations/1-watt-rf-load-termination-short-body-with-2-92mm-female-connector-dc-40-ghz/>



To view online, go to: <https://www.hasco-inc.com/terminations/1-watt-rf-load-termination-short-body-with-2-92mm-female-connector-dc-40-ghz/>

LTR	DESCRIPTION	DATE	APPR.	DRAWN BY: JMS	CHECKED BY: TAC	<div><div></div><div>HASCO, INC COMPONENTS DISTRIBUTOR</div></div> <div>5214 Bonsai Street • Moorpark, CA 93021 (888) 498-3242 • sales@hasco-inc.com <a href="http://www.hasco-inc.com">www.hasco-inc.com</a></div>				
-	RELEASE	09/19	TAC	APPROVED BY: TAC						
				THESE DRAWINGS AND SPECIFICATIONS ARE THE PROPERTY OF HASCO COMPONENTS AND SHALL NOT BE REPRODUCED, COPIED NOR USED - IN WHOLE OR IN PART - AS THE BASIS FOR THE MANUFACTURE OR SALE OF OTHER ITEMS WITHOUT THE EXPRESS, WRITTEN PERMISSION OF HASCO COMPONENTS.		MATERIALS:	CAGE CODE:	SCALE:	SIZE:	
						SEE DATA SHEET	0T8L4	N/A	A	
						FINISHES:	PART NO./DRAWING NO.			REV:
						SEE DATA SHEET	HT40F-1			-
THIS DRAWING IS A CONTROLLED DOCUMENT										