

5

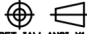
4

3

2

1

PRODUCTION  
RELEASE

NOTE:  
THIS DRAWING INCORPORATES  
THIRD ANGLE PROJECTION.  
  
INTERPRET IAW ANSI Y14.5-1992

## REVISIONS

LTR	DESCRIPTION	DATE	APPROVED
A	ADDED ORDERING INFO	7/23/09	T. KUHN

## ELECTRICAL SPECIFICATIONS

VSWR  
DC-40 GHz \_\_\_\_\_ 1.25:1 MAX.

POWER (AVG. MAX.) \_\_\_\_\_ @25°C SEE TABLE  
DERATES LINEARLY  
TO 10% @ +125°C

OPERATING TEMPERATURE RANGE \_\_\_\_\_ -55°C to +125°C

## MECHANICAL

HOUSING \_\_\_\_\_ STAINLESS STEEL IAW  
ASTM-A484 & ASTM-A582,  
ALLOY 303, COND A. PASSIVATED.

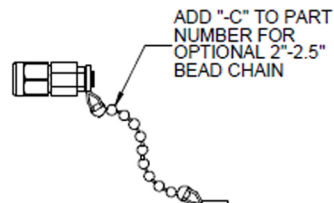
CONTACT \_\_\_\_\_ BERYLLIUM COPPER, GOLD PLATED  
IAW MIL-PRF-39012

DIELECTRIC \_\_\_\_\_ HIGH TEMPERATURE  
PLASTIC BEAD

RoHS COMPLIANT DEVICE

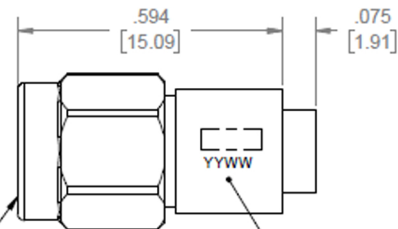
## MARKING:

PART LOOKS LIKE PRODUCT IMAGE ABOVE.  
PART MARKING ORIENTATION AND FORMAT AS SHOWN.  
MARKING TO BE AS LARGE AS POSSIBLE, CLEAR, READABLE, AND A BLACK COLOR.  
YYWW EQUALS DATE CODE

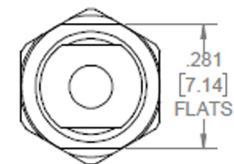


ADD "-C" TO PART  
NUMBER FOR  
OPTIONAL 2"-2.5"  
BEAD CHAIN

INTERFACE IAW MIL-STD-348 FOR  
2.9mm (SMK) AND MATES WITH ALL  
SMA CONNECTORS AS WELL



MARKING AREA  
SEE NOTES AND TABLE



## ORDERING INFORMATION

HT40M	1 WATT
HT40M-C	2" CHAIN ADDED
HT40M-2	2 WATT
HT40M-2C	2" CHAIN ADDED

DRAWING PRACTICES PER ANSI-Y-14.5  
MIL-STD-100 & 1000  
DIMENSIONS ARE IN INCHES AND  
APPLY BEFORE/AFTER PROCESSING  
SURFACE  
ROUGHNESS  
UNLESS OTHERWISE SPECIFIED  
TOLERANCES IN:  
DECIMALS INCH DIM  
.X" .05" [1.3]  
.XX" .030" [.76]  
.XXX" .02 [51]  
ANGLES  
UNLESS OTHERWISE NOTED  
DIAS CONCENTRIC <.003 T.I.R.

SEE NOTES

SEE NOTES

DRAWN  
T. KUHN 5/13/09 DATE  
CHECKED \_\_\_\_\_ DATE

ENGINEER APPR.  
T. KUHN 5/13/09 DATE

THESE DRAWINGS AND SPECIFICATIONS ARE  
THE PROPERTY OF HASCO COMPONENTS AND  
SHALL NOT BE REPRODUCED, COPIED NOR  
USED - IN WHOLE OR IN PART - AS A BASIS FOR  
THE MANUFACTURE OR SALE OF OTHER ITEMS  
WITHOUT THE EXPRESS WRITTEN PERMISSION  
OF HASCO COMPONENTS



5214 Bonsai Street  
Moorpark, CA  
(888) 498-3242  
www.hasco-inc.com

TITLE  
2.92 mm MALE TERMINATION,  
DC-40GHz

SIZE	CAGE CODE	DRAWING NUMBER
B	OT8L4	HT40M
SCALE 6:1	PLATED AREA SQ. IN XXX	SHEET 1 OF 1

BCSI

5

4

3

2

1