

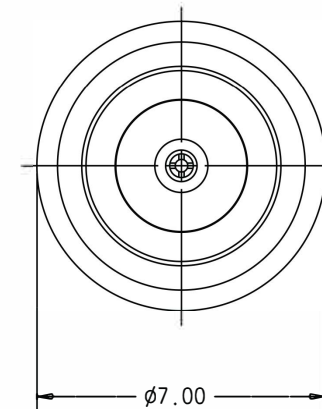
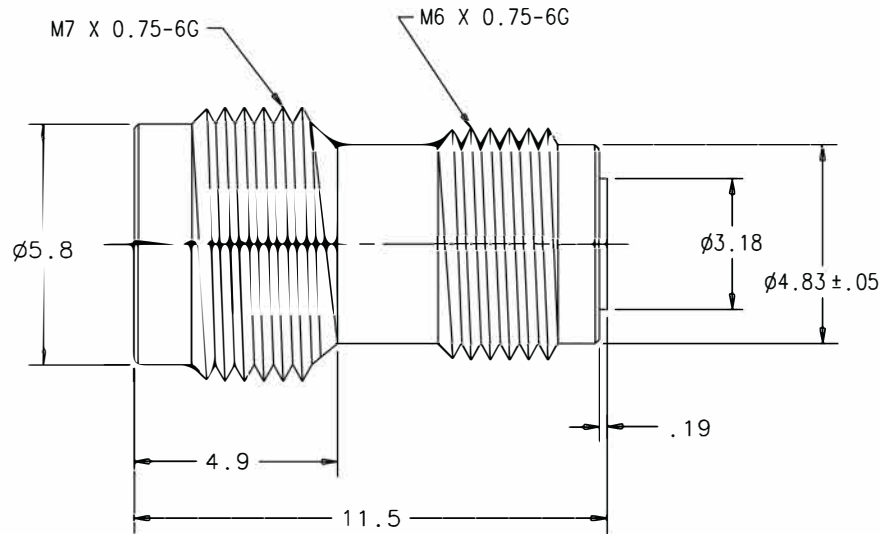
1

2

3

4

ZONE	REV	DESCRIPTION OF REVISION	ECH NO.	BY	DATE	APPROVED
	A	INITIAL ISSUE	LAB	M&M	08/04	A.T.



## NOTES:

## 1. ELECTRICAL

- 1.1. FREQUENCY RANGE:DC TO 65 GHz
- 1.2. VSWR:1.58

## 2. MECHANICAL

- 2.1. FRONT-SIDE PIN DEPTH:0.000 TO -0.130
3. OPERATING TEMPERATURE:-55°C TO +125°C

## 4. ENVIRONMENTAL

- 4.1. TEMPERATURE SHOCK:25°C TO -55°C AND 25°C TO +125°C, METHOD 107G, CONDITION B
- 4.2. MECHANICAL SHOCK:100G<sub>peak</sub> SAWTOOTH, METHOD 213, TEST CONDITION I
- 4.3. HUMIDITY:95% AT 40°C, 96 HOURS, TEST 103B, CONDITION B
- 4.4. VIBRATION=SINWAVE:10Hz TO 2000Hz, 0.06\*DA, METHOD 204, TEST CONDITION D  
RANDOM:50Hz TO 2000Hz, 11.6 Grms, Pwr SPECTRAL DENSITY  
0.1Grms<sup>2</sup>/Hz, METHOD 214, TEST CONDITION I LETTER D
- 4.5. SALT SPRAY:5% CONCENTRATION FOR 48 HOURS, METHOD 101D, CONDITION B
- 4.6. VOLTAGE WITHSTANDING:500vac RMS, 60 SECONDS, METHOD 301

## 5. MATERIALS:

- 5.1. OUTER CONDUCTOR:STAINLESS STEEL
- 5.2. BEAD HOLDER:BeCu, GOLD PLATED OVER NICKEL
- 5.3. CENTER CONDUCTOR:HEAT TREATED BeCu, GOLD PLATED OVER NICKEL
- 5.4. SUPPORT BEAD:TEFLON

DIMENSIONS ARE FOR REFERENCE ONLY

UNLESS OTHERWISE SPECIFIED, ALL DIMENSIONS ARE IN MILLIMETERS (mm)		DRAWN M. MEZA DATE 02/24/04		MATERIAL:SEE SEPARATE PRODUCT STRUCTURE	
CHECKED A. SHARMA DATE 08/04		APPROVED A. THOMAS DATE 08/04		Anritsu 490 JARVIS DRIVE MORGAN HILL, CA. 95037	
SEE PRODUCT STRUCTURE		TOLERANCES: UNLESS OTHERWISE SPECIFIED		TITLE V102FR OUTLINE	
ALL INFORMATION SHOWN ON THIS SPECIFICATION IS PROPRIETARY INFORMATION OF ANRITSU COMPANY		1 PLACES ANGLES		FSM NO. 20944	
DO NOT SCALE DRAWING		2 PLACES SURFACE FINISH ✓		DRAWING NO. 62462	
		3 PLACES FINISH		REV A	
		SCALE 8/1		UNDER ECH CONTROL 08/04 BY PL M.E DATE	
				SHEET 1 OF 1	