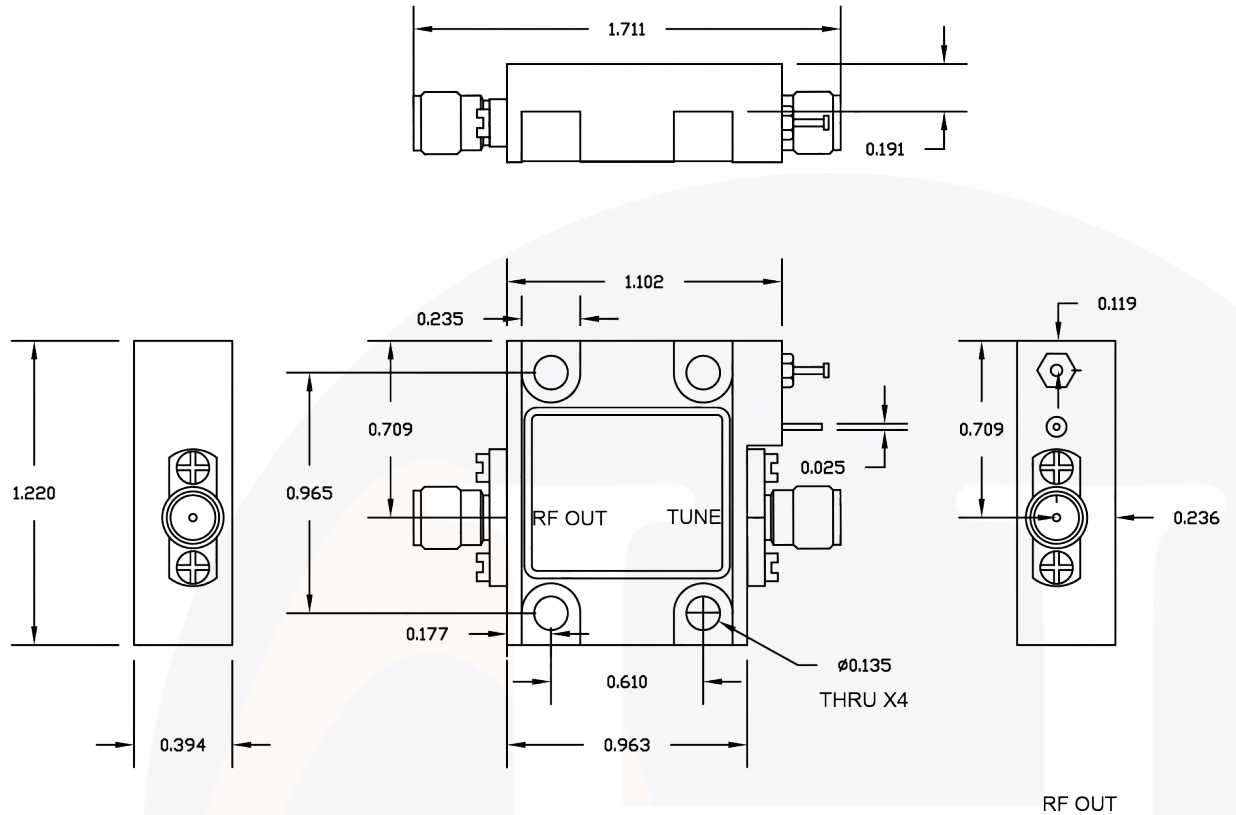



Wide Band Voltage Controlled Oscillator with SMA Female Connectors | 2 - 3 GHz | DATASHEET

SPECIFICATIONS

FREQUENCY RANGE	2 - 3 GHz
TUNING VOLTAGE	0 - 20 V DC
TUNING SPEED	< 20 usec
TUNE PORT LEAKAGE CURRENT	0.1 mA Max
PUSHING	1 MHz/V
FREQUENCY DRIFT	1 MHz/°C
POWER OUTPUT	+ 14 dBm Min
PHASE NOISE	-60 dBc @ 10 kHz
2ND HARMONICS	-15 dBc
VOLTAGE	+ 12 V DC \pm 3 V
CURRENT	200 mA Typical
TEMPERATURE RANGE	0°C to +60°C (operating) -65°C to +125°C (storage)
HOUSING	Electroless Nickel plated Aluminum



LTR	DESCRIPTION	DATE	APPR.	DRAWN BY: NS		 <div>HASCO COMPONENTS</div>	5214 Bonsai Avenue • Moorpark, CA 93021 (888) 498-3242 • sales@hasco-inc.com www.hasco-inc.com		
-	RELEASE	7/25	TC						
				THESE DRAWINGS AND SPECIFICATIONS ARE THE PROPERTY OF HASCO COMPONENTS AND SHALL NOT BE REPRODUCED, COPIED NOR USED - IN WHOLE OR IN PART - AS THE BASIS FOR THE MANUFACTURE OR SALE OF OTHER ITEMS WITHOUT THE EXPRESS, WRITTEN PERMISSION OF HASCO COMPONENTS.		MATERIALS: SEE DATA SHEET	CAGE CODE:	SCALE:	SIZE:
							OT8L4	N/A	A
						FINISHES: SEE DATA SHEET	PART NO./DRAWING NO.		REV:
							VTO-S10008-14190203		-
THIS DRAWING IS A CONTROLLED DOCUMENT									