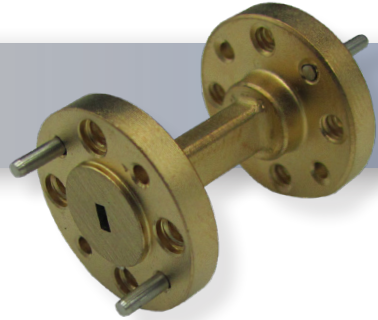


Part No:

# HWSS05-1.0-ER



*WR-5 Millimeter Waveguide Straight Section, 1 Inch  
140 GHz to 220 GHz, G-Band*

The HASCO WR-5 Millimeter Waveguide Straight Section **HWSS05-1.0-ER** operates from 140 GHz to 220 GHz. This WR-5, waveguide section is constructed with a Round UG-387/U-M Flange.

HASCO rectangular waveguides are manufactured from brass, OFHC copper, aluminum or coin silver. Waveguides have significant advantages over coaxial transmission in power handling, insertion loss and signal integrity (leakage and electromagnetic interference - EMI).

HASCO offers a series of millimeter waveguide straight sections, E-Bends, H-Bends and 90° Twists. Anti-cocking flanges available if required. All are available in standard and custom lengths covering the waveguide sizes WR-3, WR-4, WR-5, WR-6, WR-8, WR-10, WR-12, WR-15, WR-19, WR-22, WR-28, WR-34 and WR-42. Square waveguide flanges are available in WR-22, WR-28, WR-34 and WR-42. Please contact HASCO for custom options.

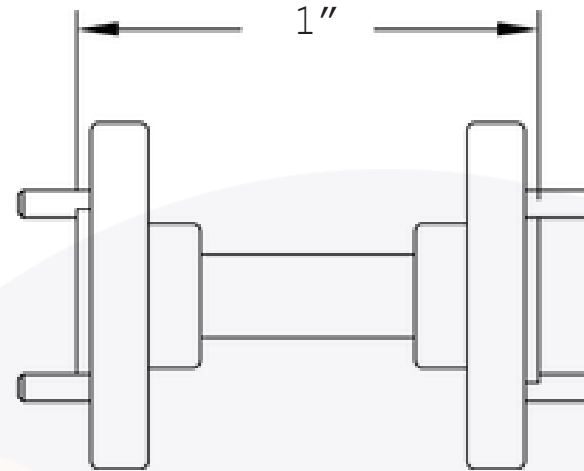
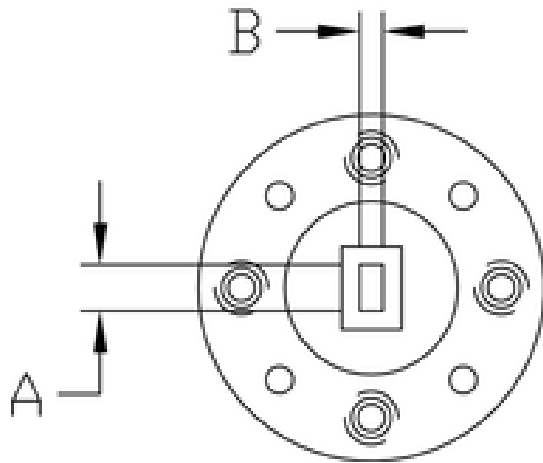
## Electrical

• Frequency Range	140 to 220 GHz
• VSWR	1.04:1 Max
• Impedence	50 Ohms
• Waveguide	WR-5
• Flange	UG-387/U-M
• Length	1 Inch
• Temperature Range	220°C Max

## Material

• Waveguide	OFHC
• Flange	Brass
• Finish	Gold Plated per MIL-DTL-45204

# WR-5 Millimeter Waveguide Straight Section, 1 inch | 140 GHz - 220 GHz | Outline Drawing



Part Number	WG Size	DIM A	DIM B
HWSS22-X.X-ER	WR-22	0.224	0.112
HWSS19-X.X-ER	WR-19	0.188	0.094
HWSS15-X.X-ER	WR-15	0.148	0.074
HWSS12-X.X-ER	WR-12	0.122	0.061
HWSS10-X.X-ER	WR-10	0.100	0.050
HWSS08-X.X-ER	WR-08	0.080	0.040
HWSS06-X.X-ER	WR-06	0.065	0.0325
HWSS05-X.X-ER	WR-05	0.051	0.0255

LTR	DESCRIPTION	DATE	APPR.	DRAWN BY: NS	CHECKED BY: JMS
-	RELEASE	08/19	TAC		APPROVED BY: TAC
A	PHOTO/LOGO UPDATE	10/22	TAC	THESE DRAWINGS AND SPECIFICATIONS ARE THE PROPERTY OF HASCO COMPONENTS AND SHALL NOT BE REPRODUCED, COPIED NOR USED - IN WHOLE OR IN PART - AS THE BASIS FOR THE MANUFACTURE OR SALE OF OTHER ITEMS WITHOUT THE EXPRESS, WRITTEN PERMISSION OF HASCO COMPONENTS.	
B	TABLE UPDATE	12/23	TAC		
THIS DRAWING IS A CONTROLLED DOCUMENT					



5214 Bonsai Street • Moorpark, CA 93021  
 (888) 498-3242 • sales@hasco-inc.com  
[www.hasco-inc.com](http://www.hasco-inc.com)

MATERIALS: SEE DATA SHEET	CAGE CODE: OT8L4	SCALE: N/A	SIZE: A
FINISHES: SEE DATA SHEET	PART NO./DRAWING NO. <b>HWSS05-1.0-ER</b>		REV: B