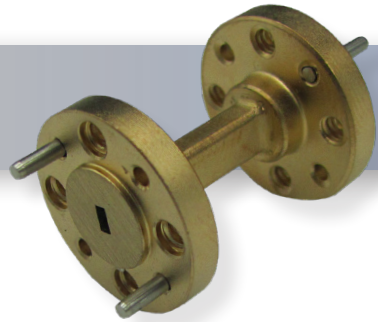


Part No:

# HWSS06-1.5-ER



*WR-6 Millimeter Waveguide Straight Section, 1.5 Inch  
110 GHz to 175 GHz, D-Band*

The HASCO WR-6 Millimeter Waveguide Straight Section **HWSS06-1.5-ER** operates from 110 GHz to 175 GHz. This WR-6, waveguide section is constructed with a Round UG-387/U-M Flange.

HASCO rectangular waveguides are manufactured from brass, OFHC copper, aluminum or coin silver. Waveguides have significant advantages over coaxial transmission in power handling, insertion loss and signal integrity (leakage and electromagnetic interference - EMI).

HASCO offers a series of millimeter waveguide straight sections, E-Bends, H-Bends and 90° Twists. Anti-cocking flanges available if required. All are available in standard and custom lengths covering the waveguide sizes WR-3, WR-4, WR-5, WR-6, WR-8, WR-10, WR-12, WR-15, WR-19, WR-22, WR-28, WR-34 and WR-42. Square waveguide flanges are available in WR-22, WR-28, WR-34 and WR-42. Please contact HASCO for custom options.

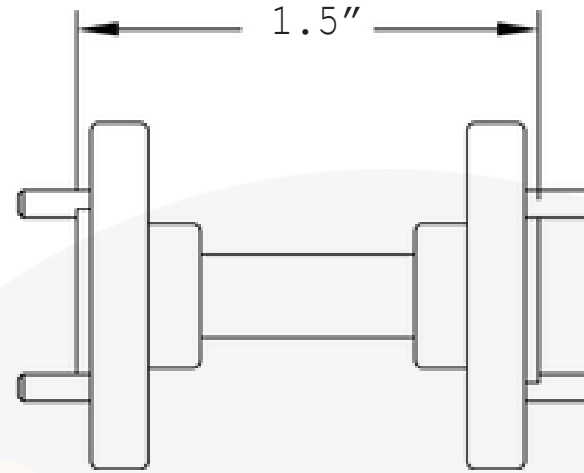
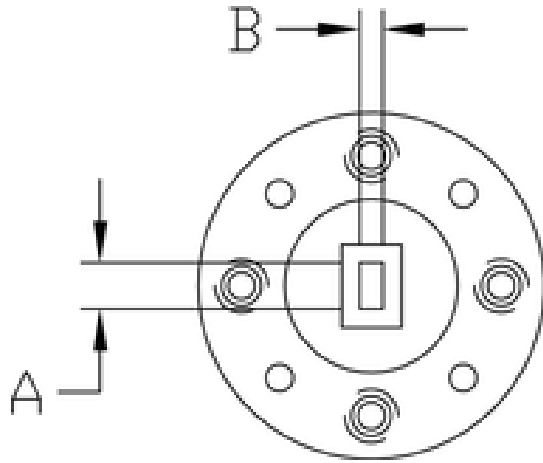
## Electrical

|                     |                |
|---------------------|----------------|
| • Frequency Range   | 110 to 175 GHz |
| • VSWR              | 1.03:1 Max     |
| • Impedence         | 50 Ohms        |
| • Waveguide         | WR-6           |
| • Flange            | UG-387/U-M     |
| • Length            | 1.5 Inch       |
| • Temperature Range | 220°C Max      |

## Material

|             |                               |
|-------------|-------------------------------|
| • Waveguide | OFHC                          |
| • Flange    | Brass                         |
| • Finish    | Gold Plated per MIL-DTL-45204 |

# WR-6 Millimeter Waveguide Straight Section, 1.5 inch | 110 GHz - 175 GHz | Outline Drawing



| Part Number   | WG Size | DIM A | DIM B  |
|---------------|---------|-------|--------|
| HWSS22-X.X-ER | WR-22   | 0.224 | 0.112  |
| HWSS19-X.X-ER | WR-19   | 0.188 | 0.094  |
| HWSS15-X.X-ER | WR-15   | 0.148 | 0.074  |
| HWSS12-X.X-ER | WR-12   | 0.122 | 0.061  |
| HWSS10-X.X-ER | WR-10   | 0.100 | 0.050  |
| HWSS08-X.X-ER | WR-08   | 0.080 | 0.040  |
| HWSS06-X.X-ER | WR-06   | 0.065 | 0.0325 |
| HWSS05-X.X-ER | WR-05   | 0.051 | 0.0255 |

|                                       |                   |       |       |  |                  |
|---------------------------------------|-------------------|-------|-------|--|------------------|
| LTR                                   | DESCRIPTION       | DATE  | APPR. | DRAWN BY: NS   | CHECKED BY: JMS  |
| -                                     | RELEASE           | 08/19 | TAC   |  | APPROVED BY: TAC |
| A                                     | PHOTO/LOGO UPDATE | 10/22 | TAC   | THESE DRAWINGS AND SPECIFICATIONS ARE THE PROPERTY OF HASCO COMPONENTS AND SHALL NOT BE REPRODUCED, COPIED NOR USED - IN WHOLE OR IN PART - AS THE BASIS FOR THE MANUFACTURE OR SALE OF OTHER ITEMS WITHOUT THE EXPRESS, WRITTEN PERMISSION OF HASCO COMPONENTS. |                  |
| B                                     | TABLE UPDATE      | 12/23 | TAC   |  |                  |
|                                       |                   |       |       |  |                  |
|                                       |                   |       |       |  |                  |
|                                       |                   |       |       |  |                  |
| THIS DRAWING IS A CONTROLLED DOCUMENT |                   |       |       |  |                  |



5214 Bonsai Street • Moorpark, CA 93021  
 (888) 498-3242 • sales@hasco-inc.com  
[www.hasco-inc.com](http://www.hasco-inc.com)

|                              |  |               |            |
|------------------------------|--|---------------|------------|
| MATERIALS:<br>SEE DATA SHEET | CAGE CODE:<br>OT8L4                          | SCALE:<br>N/A | SIZE:<br>A |
| FINISHES:<br>SEE DATA SHEET  | PART NO./DRAWING NO.<br><b>HWSS06-1.5-ER</b> |               | REV:<br>B  |