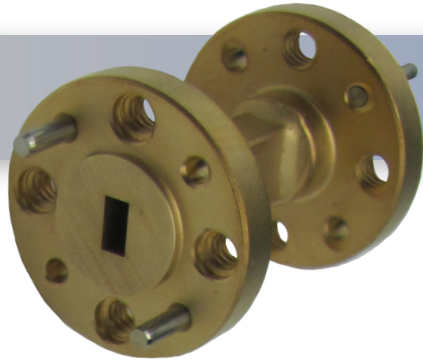


Part No:

HWSS15-1.0-ER-1



WR-15 Millimeter Waveguide Straight Section, 1 Inch 50 GHz to 75 GHz, V-Band

The HASCO WR-15 Millimeter Waveguide Straight Section **HWSS15-1.0-ER-1** operates from 50 GHz to 75 GHz. This WR-15, V-Band waveguide section is constructed with a Round UG-387/U-M Flange.

HASCO rectangular waveguides are manufactured from brass, OFHC copper, aluminum or coin silver. Waveguides have significant advantages over coaxial transmission in power handling, insertion loss and signal integrity (leakage and electromagnetic interference - EMI).

HASCO offers a series of millimeter waveguide straight sections, E-Bends, H-Bends and 90° Twists. Anti-cocking flanges available if required. All are available in standard and custom lengths covering the waveguide sizes WR-3, WR-4, WR-5, WR-6, WR-8, WR-10, WR-12, WR-15, WR-19, WR-22, WR-28, WR-34 and WR-42. Square waveguide flanges are available in WR-22, WR-28, WR-34 and WR-42. Please contact HASCO for custom options.

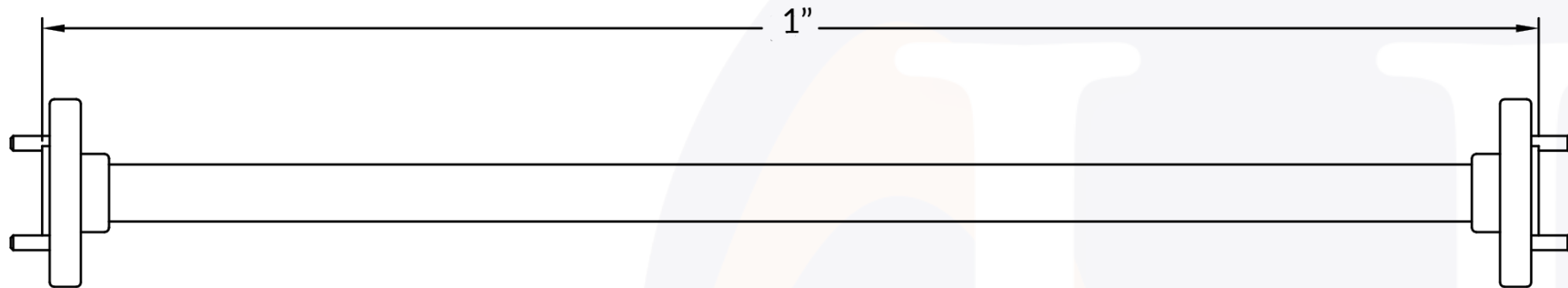
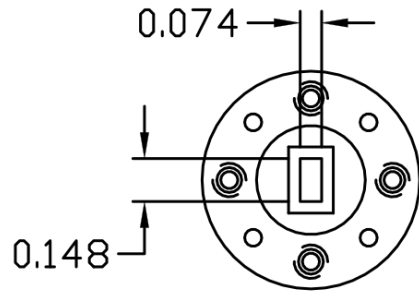
Specifications


- Frequency Range 50 GHz to 75 GHz
- VSWR 1.03:1
- Length 1 inch
- RF Ports WR-15 Waveguide with UG-387/U-M Round Flange
- Temperature Range 220°C Max

Material

- Material Brass
- Finish Gold Plated per MIL-DTL-45204

WR-15 Millimeter Waveguide Straight Section 1 inch | 50 GHz to 75 GHz | Outline Drawing



LTR	DESCRIPTION	DATE	APPR.	CREATED BY: <i>NS</i>	CHECKED BY: <i>JMS</i>	 5214 Bonsai Street • Moorpark, CA 93021 (888) 498-3242 • sales@hasco-inc.com www.hasco-inc.com				
-	RELEASE	11/22	TAC	REVIEWED BY: <i>GC</i>	APPROVED BY: <i>TAC</i>		MATERIALS:	CAGE CODE:	SCALE:	SIZE:
A	UPDATED PHOTO	01/26	TAC	THESE DRAWINGS AND SPECIFICATIONS ARE THE PROPERTY OF HASCO COMPONENTS AND SHALL NOT BE REPRODUCED, COPIED NOR USED - IN WHOLE OR IN PART - AS THE BASIS FOR THE MANUFACTURE OR SALE OF OTHER ITEMS WITHOUT THE EXPRESS, WRITTEN PERMISSION OF HASCO COMPONENTS.			SEE DATA SHEET	0T8L4	N/A	A
						FINISHES:	PART NO./DRAWING NO.	REV:		
						SEE DATA SHEET	HWSS15-1.0-ER-1	A		
						THIS DRAWING IS A CONTROLLED DOCUMENT				