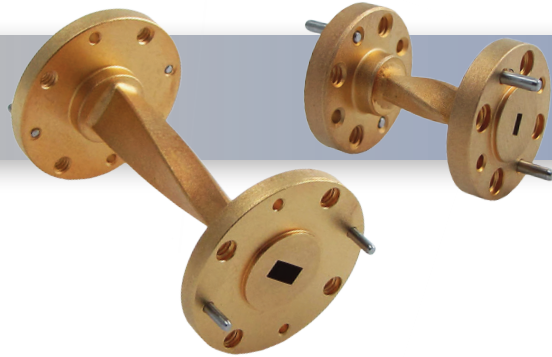


Part No:

HWTW10-1-ER



WR-10 Millimeter Waveguide 90° Twist, 1 Inch 75 GHz to 110 GHz, W-Band

The HASCO WR-10 Millimeter Waveguide 90° Twist **HWTW10-1-ER** operates from 75 GHz to 110 GHz. This WR-10, W-Band waveguide 90° Twist is constructed with a Round UG-387/U-M Flange.

HASCO rectangular waveguides are manufactured from brass, OFHC copper, aluminum or coin silver. Waveguides have significant advantages over coaxial transmission in power handling, insertion loss and signal integrity (leakage and electromagnetic interference - EMI).

HASCO offers a series of millimeter waveguide straight sections, E-Bends, H-Bends and 90° Twists. Anti-cocking flanges available if required. All are available in standard and custom lengths covering the waveguide sizes WR-3, WR-4, WR-5, WR-6, WR-8, WR-10, WR-12, WR-15, WR-19, WR-22, WR-28, WR-34 and WR-42. Square waveguide flanges are available in WR-22, WR-28, WR-34 and WR-42. Please contact HASCO for custom options.

Specifications

• Frequency Range	75 GHz to 110 GHz
• VSWR	1.03:1
• Impedance	50 Ohms
• Length	1 inch
• RF Ports	WR-10 Waveguide with UG-387/U-M Flange

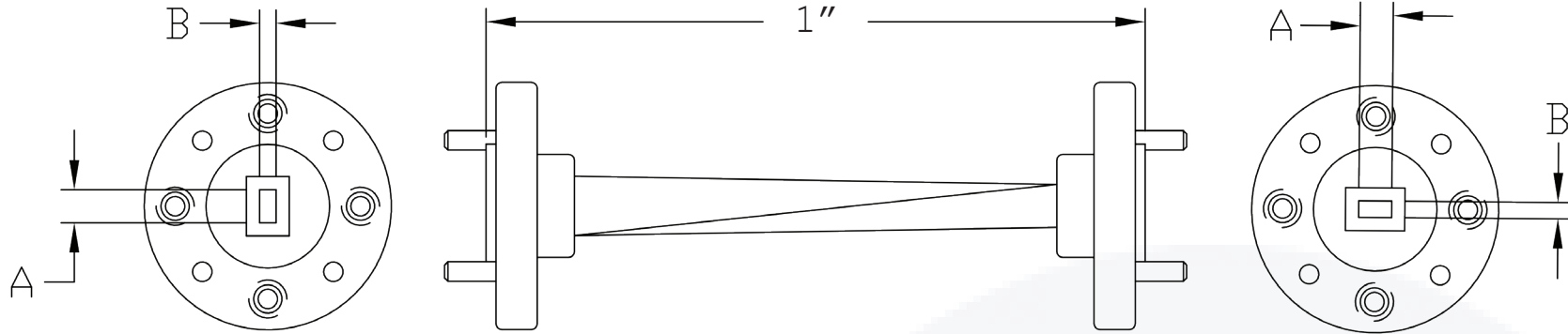
Environmental Data

• Temperature Range	220°C Max
---------------------	-----------

Material

• Waveguide	OFHC Copper
• Flange	Round UG-387/U-M, Brass
• Finish	Gold Plated per MIL-DTL-45204

HWTW10-1-ER | 75 GHz to 110 GHz | Outline Drawing



Part Number	WG Size	DIM A	DIM B
HWTW22-X-ER	WR-22	0.224	0.112
HWTW19-X-ER	WR-19	0.188	0.094
HWTW15-X-ER	WR-15	0.148	0.074
HWTW12-X-ER	WR-12	0.122	0.061
HWTW10-X-ER	WR-10	0.100	0.050
HWTW08-X-ER	WR-08	0.080	0.040
HWTW06-X-ER	WR-06	0.065	0.0325
HWTW05-X-ER	WR-05	0.051	0.0255
HWTW04-X-ER	WR-04	0.043	0.0215
HWTW03-X-ER	WR-03	0.034	0.017

LTR	DESCRIPTION	DATE	APPR.	CREATED BY: <i>JMS</i>	CHECKED BY: <i>TAC</i>
-	RELEASE	08/19	TAC	APPROVED BY: <i>TAC</i>	
				THESE DRAWINGS AND SPECIFICATIONS ARE THE PROPERTY OF HASCO COMPONENTS AND SHALL NOT BE REPRODUCED, COPIED NOR USED - IN WHOLE OR IN PART - AS THE BASIS FOR THE MANUFACTURE OR SALE OF OTHER ITEMS WITHOUT THE EXPRESS, WRITTEN PERMISSION OF HASCO COMPONENTS.	
THIS DRAWING IS A CONTROLLED DOCUMENT					



5214 Bonsai Street • Moorpark, CA 93021
 (888) 498-3242 • sales@hasco-inc.com
www.hasco-inc.com

MATERIALS: SEE DATA SHEET	CAGE CODE: 0T8L4	SCALE: N/A	SIZE: A
FINISHES: SEE DATA SHEET	PART NO./DRAWING NO. HWTW10-1-ER		REV: -